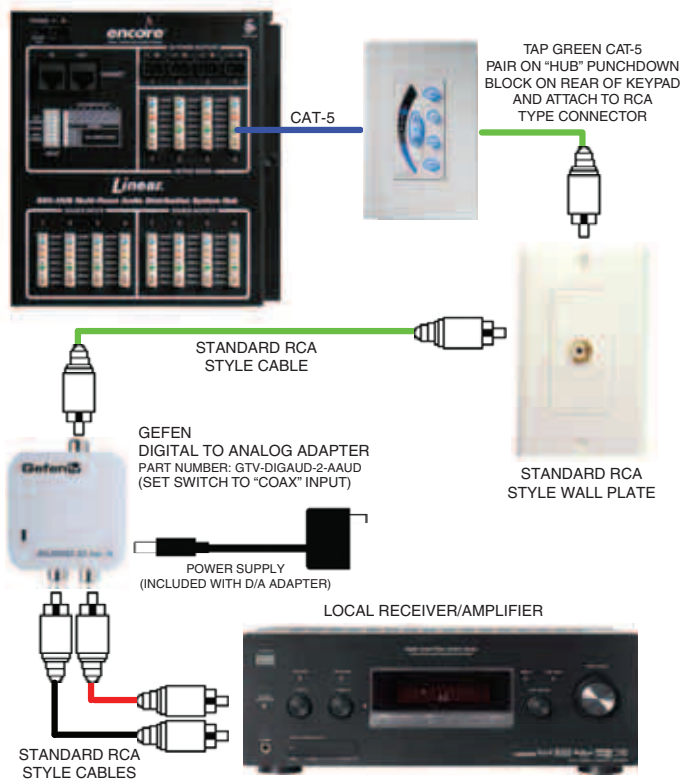


## Encore System Line Level Output

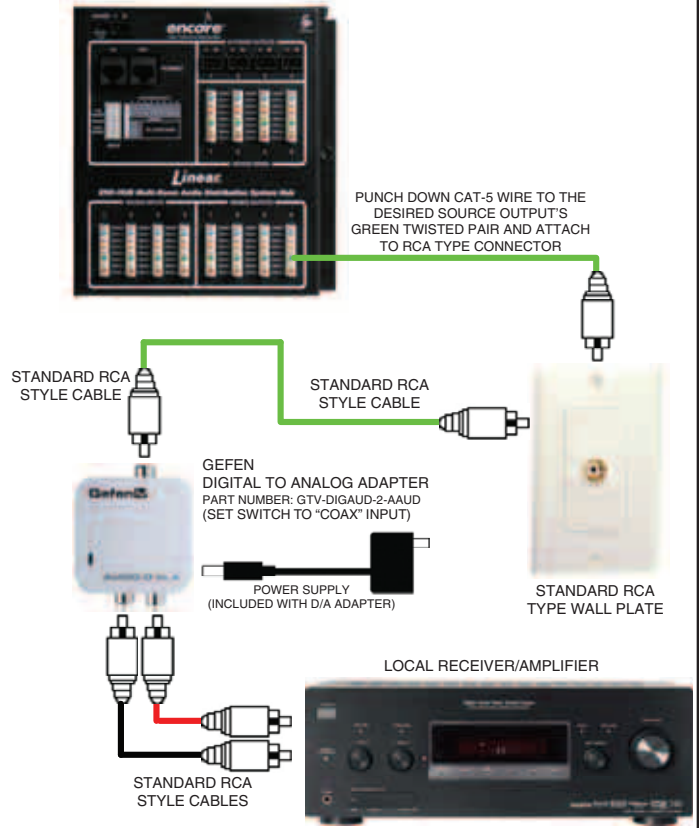
Linear's Encore Audio Distribution System can be wired to provide line level outputs for use with an external amplifier. Connections can be wired for an Encore keypad selected source component, or wired to select a dedicated source component.

Refer to the following illustrations for wiring details regarding each type of connection.

### KEYPAD SWITCHABLE LINE LEVEL SOURCE OUTPUT



### NON-SWITCHING LINE LEVEL SOURCE OUTPUT



#### NOTES:

- Keypad requests a specific system audio source from the Distribution Hub.
- Source is then routed from the Distribution Hub to the Keypad.
- Keypad selected source is available at the Keypad punch down block (SPDIF on green twisted pair).
- Keypad selectable source can be "tapped" into by punching down two CAT-5 wires to the "HUB" punch down block that is connected to the green twisted pair from the Distribution Hub and then connecting these wires to the back of an RCA style connector using standard industry practices (Note: Polarity does not matter when connecting the CAT-5 wires to the RCA plug).
- The RCA style connector is then connected to a Gefen Digital-to-Analog adapter, converting the 24-bit SPDIF into a line level stereo analog output.
- Connecting speakers to the Keypad is optional.

#### NOTES:

- There is always one set of source output connectors available on a Distribution Hub of an Encore Audio Distribution System.
- These individual sources can be tapped into by simply punching down CAT-5 wire to the desired source output's green twisted pair. This is a non-source switching configuration (dedicated source).
- Connect the two wires to the back of an RCA style connector using standard industry practices (Note: Polarity does not matter when connecting the CAT-5 wires to the RCA plug).
- The RCA style connector is then connected to a Gefen Digital-to-Analog adapter, converting the 24-bit SPDIF into a stereo analog output.

All these brands are now under one name.

