

## SINGLE TRANSMITTER REMOVE FEATURE ADDED TO ALL GDOS

Responding to requests from the field, Linear's line of garage door operators now support a new popular feature that allows individually removing a single transmitter or keypad code stored in memory.

Previously, removing transmitters or keypad codes that were programmed into the operator would erase *ALL* of the transmitters and keypad codes. Now, the installer and homeowner has the option to remove one select transmitter or keypad code at a time, or completely erase all transmitters and keypad codes.

The following garage door operator models with date codes starting at September 2010 support this new feature:

- LD033
- LD050
- LS050
- LC075

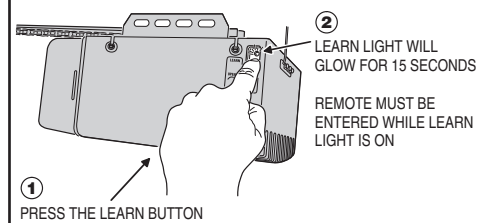
*Note: Linear's LDC0800 DC Motor garage door operator has always contained this feature.*

See below for an excerpt from the instructions detailing the transmitter and keypad code adding and removing procedure.

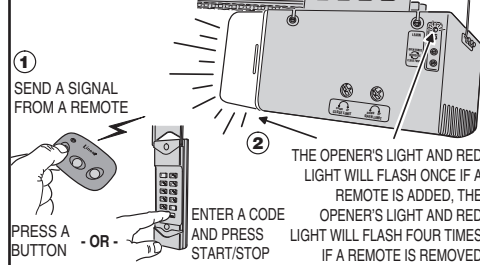
### To Add or Remove a Remote Control

- 1 Press the opener's LEARN button. The opener's light and red light will flash once and turn on for about 15 seconds. **A remote must be added or removed while the red light is still on.**
- 2 Send a signal from a remote. The opener's light and the red light will flash once if a remote was added, or the opener's light and the red light will flash four times if a remote was removed.
- 3 Repeat Steps 1 & 2 for any additional remote controls.

#### PREPARING TO ADD A REMOTE



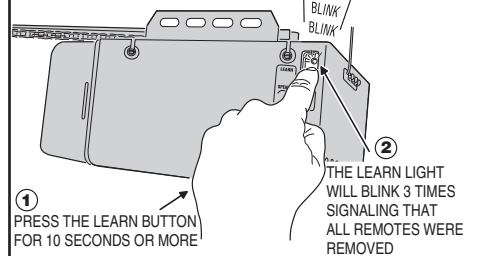
#### ADDING A REMOTE



### To Remove all Remote Controls

- 1 Press and hold the opener's LEARN button for ten seconds or more.
- 2 Release the LEARN button. **The red light and opener's light will blink three times signaling that all of the remotes in the opener's memory were erased.** The red light will turn off, then turn on for 15 seconds. A remote control can be entered during this time using Step 2 above.

#### REMOVING ALL REMOTES



All these brands are now under one name.

