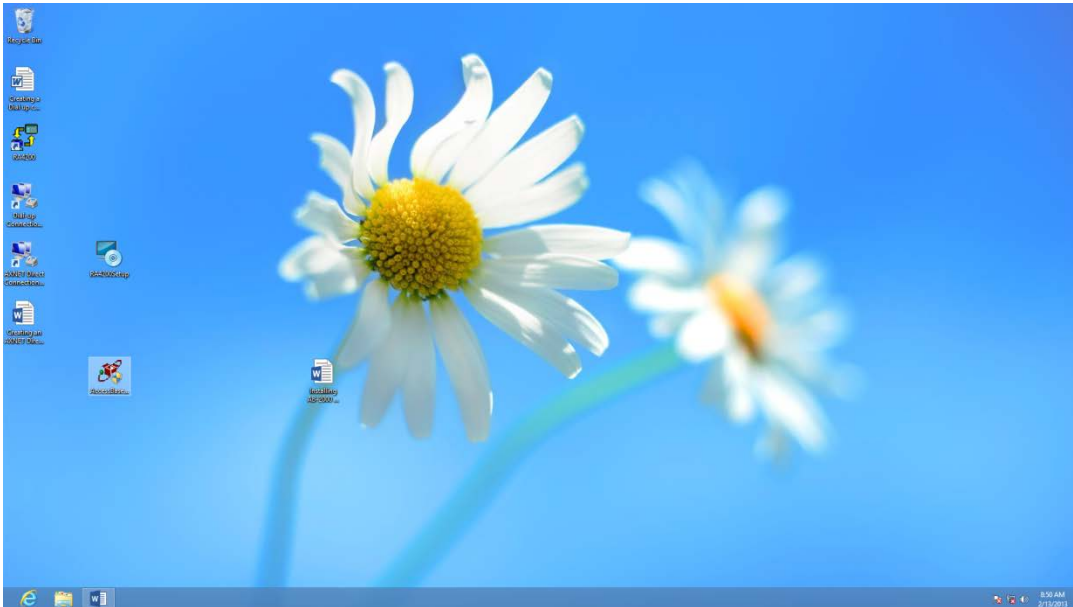


# Installing Accessbase 2000 Under Windows 8

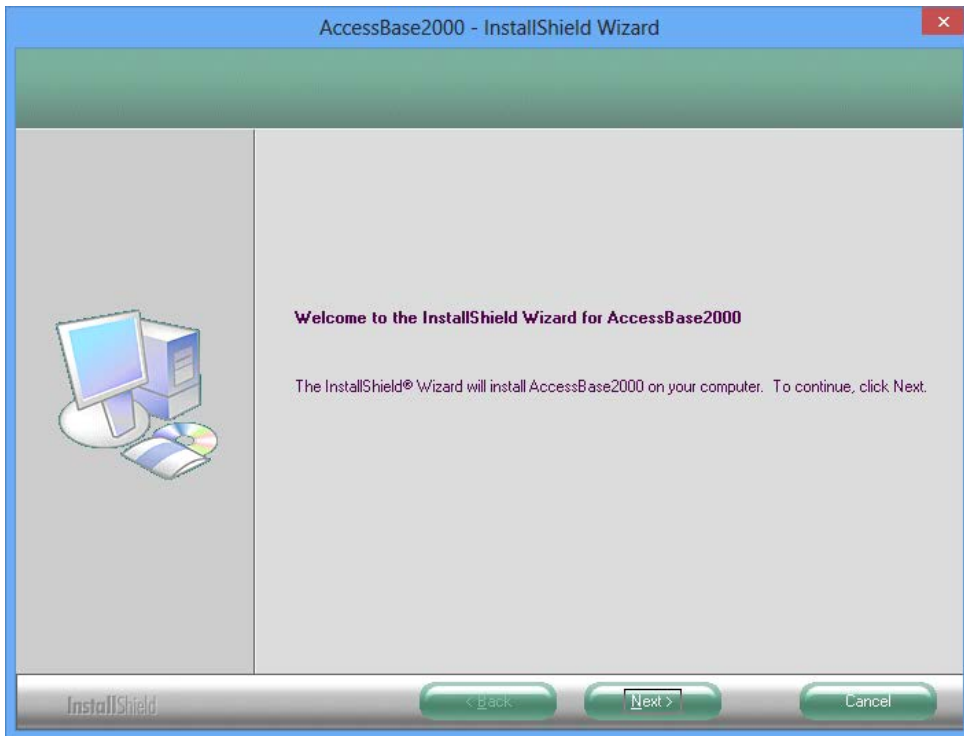
1. Run the Accessbase 2000 installation program.



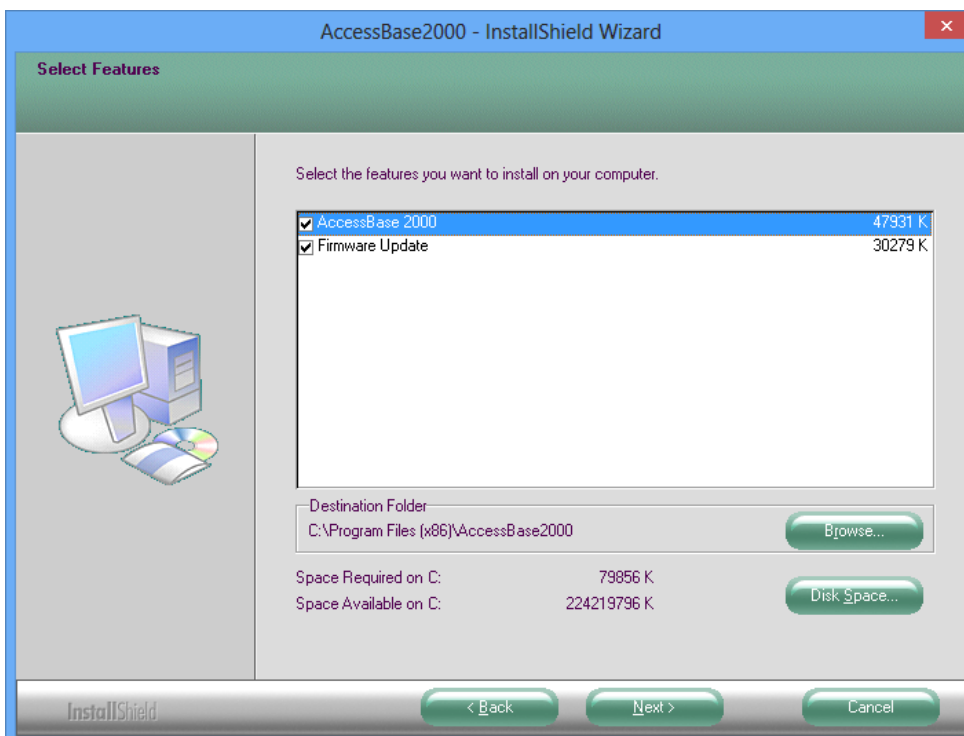
2. Click Continue.



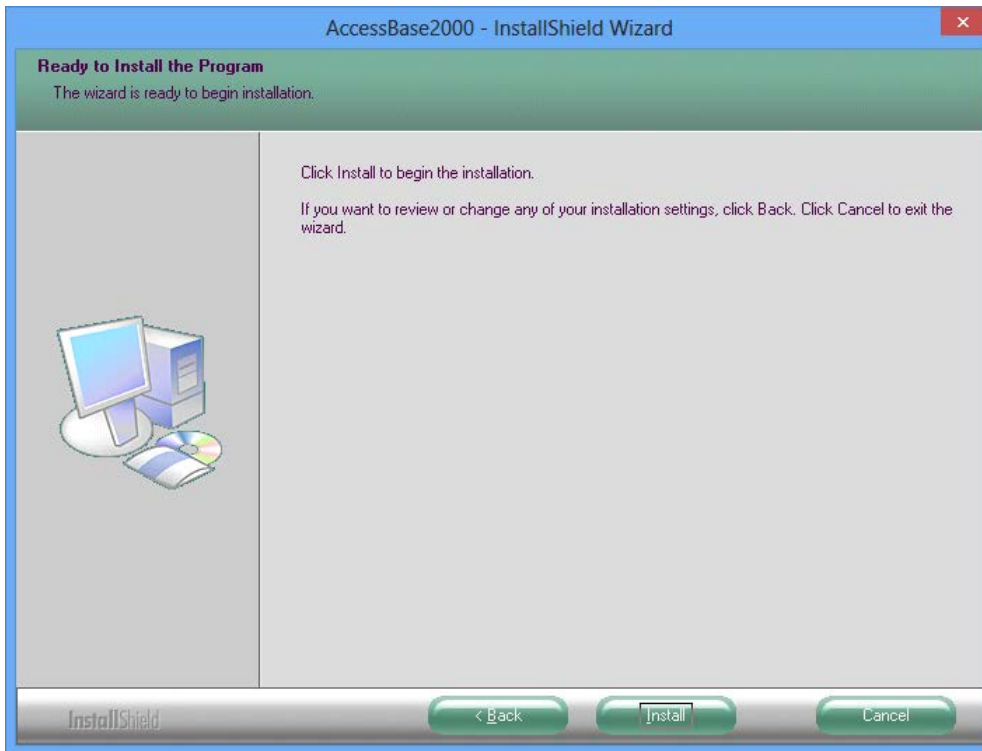
3. Click Next.



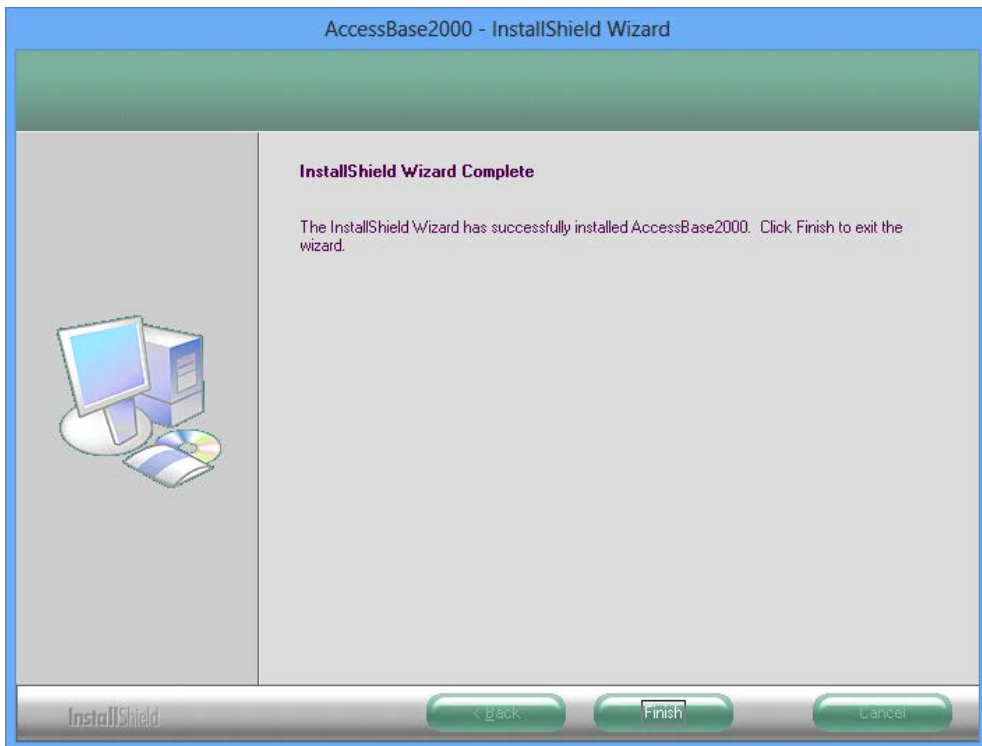
4. Click Next.



5. Click Install.



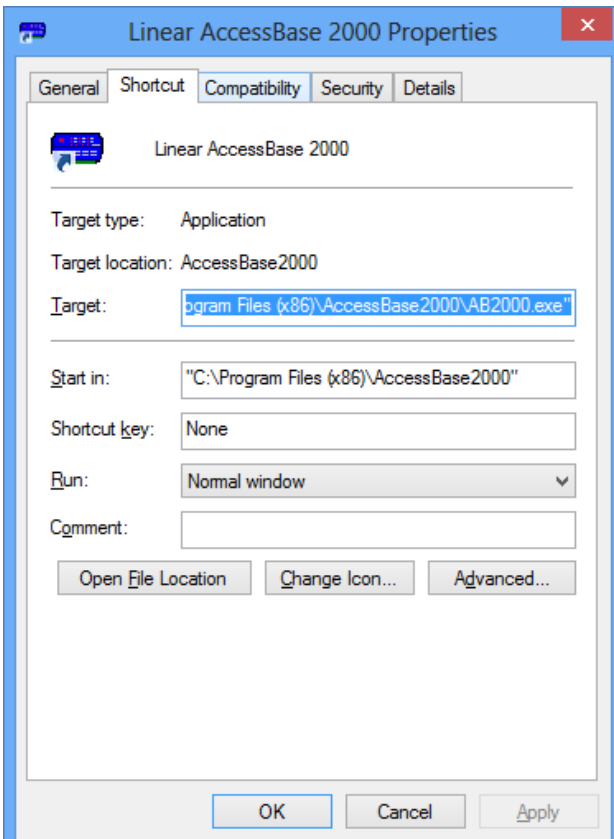
6. Click Finish.



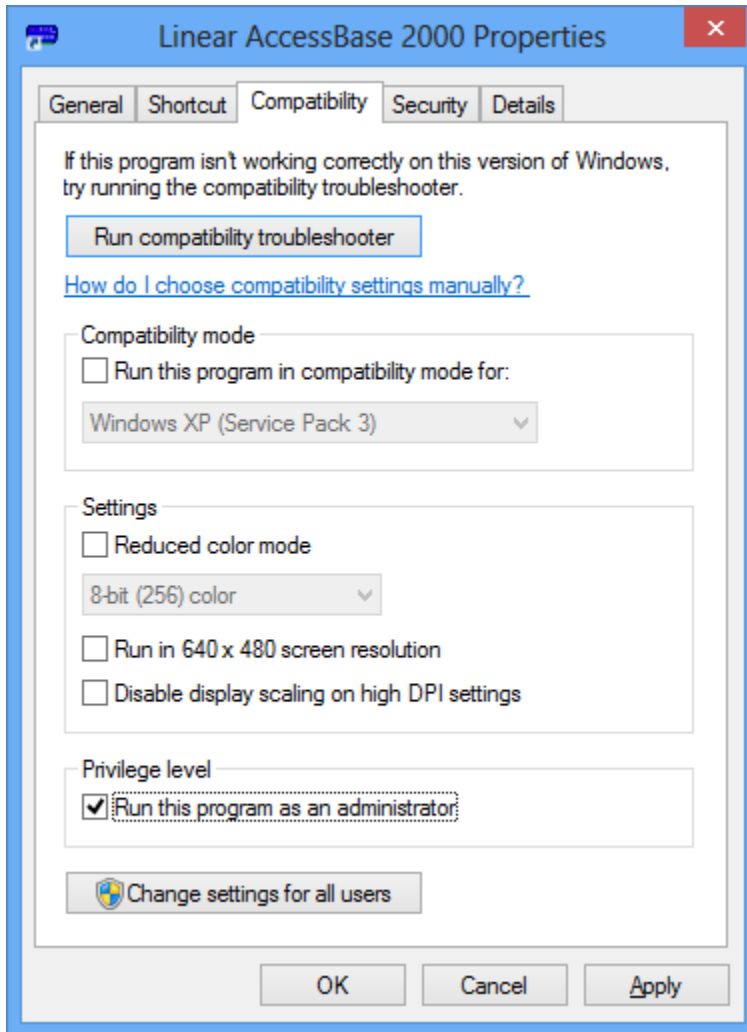
7. Right click on the Accessbase 2000 Icon.
8. Select Properties.



9. Select the Compatibility tab.



10. Click on Run this program as an Administrator.
11. Click OK.



Note: All screen shots are taken from Windows 8 Enterprise Edition. Your screens maybe different depending on the version of Windows 8 you have installed.