

Creating a Dial-Up Connection In Windows 8

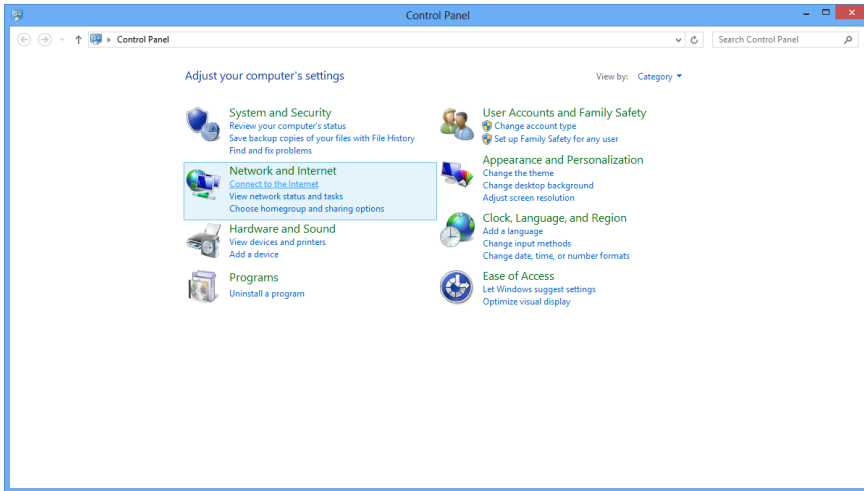
NOTE:

- A. For AE-500 and Axnet, complete steps 1 - 20
- B. For RE-1 and RE-2, complete steps 1 - 33

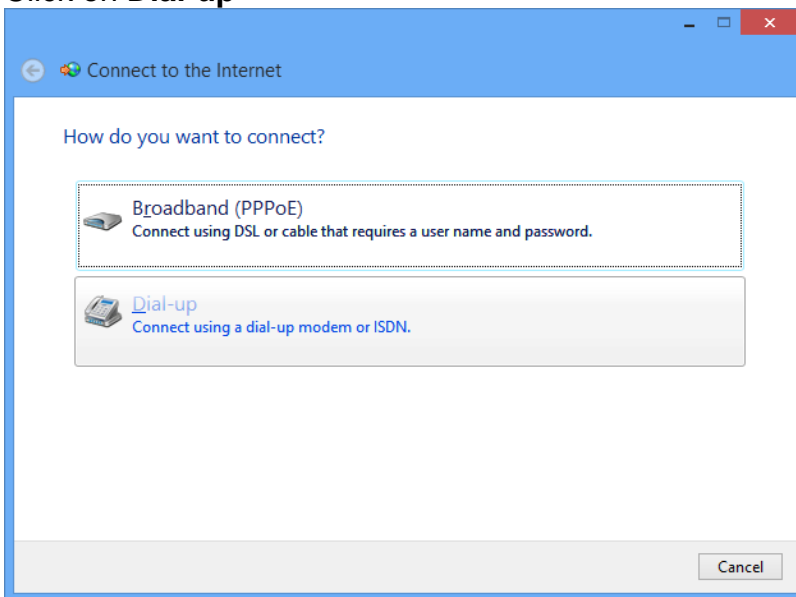
1. Go to **Settings**.
2. Click on **Control Panel**.



3. Click on **Connect to the Internet** under **Network and Internet**.



4. Click on **Dial-up**



5. Enter the phone number for the panel.
6. Enter the user name, Linear.
7. Enter the password, 123456.
8. Enter the connection name.

9. Click **Connect**.

Connect to the Internet

Type the information from your Internet service provider (ISP)

Dial-up phone number: 555-1234 [Dialing Rules](#)

User name: Linear

Password: 123456

Show characters

Remember this password

Connection name: Dial-up Connection

Allow other people to use this connection
This option allows anyone with access to this computer to use this connection.

[I don't have an ISP](#)

Connect Cancel

10. Click **Skip**.

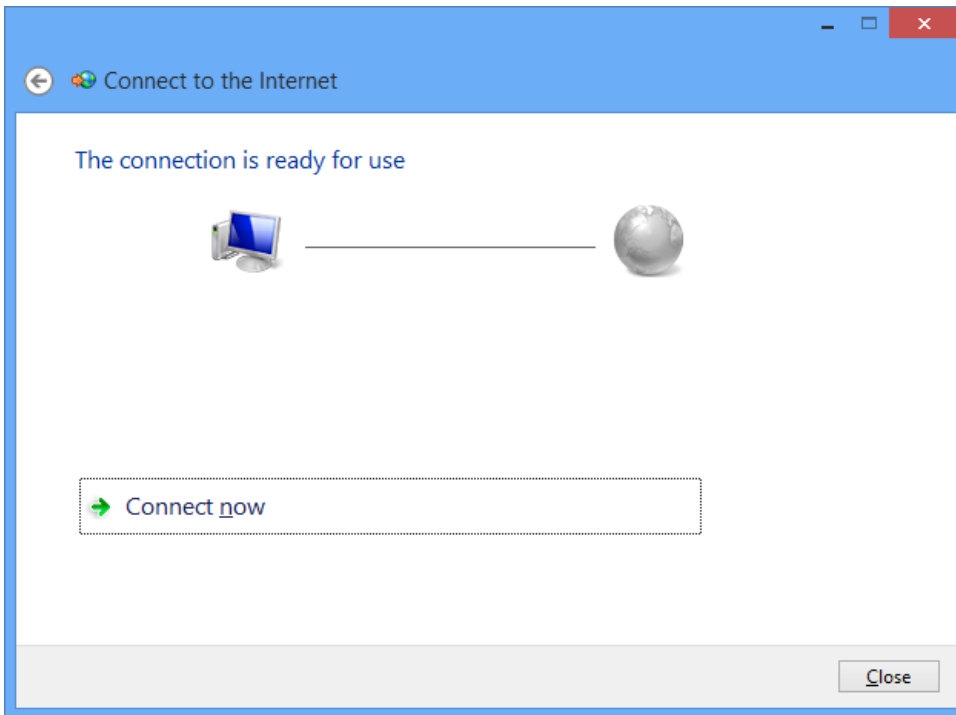
Connect to the Internet

Connecting to Dial-up Connection...

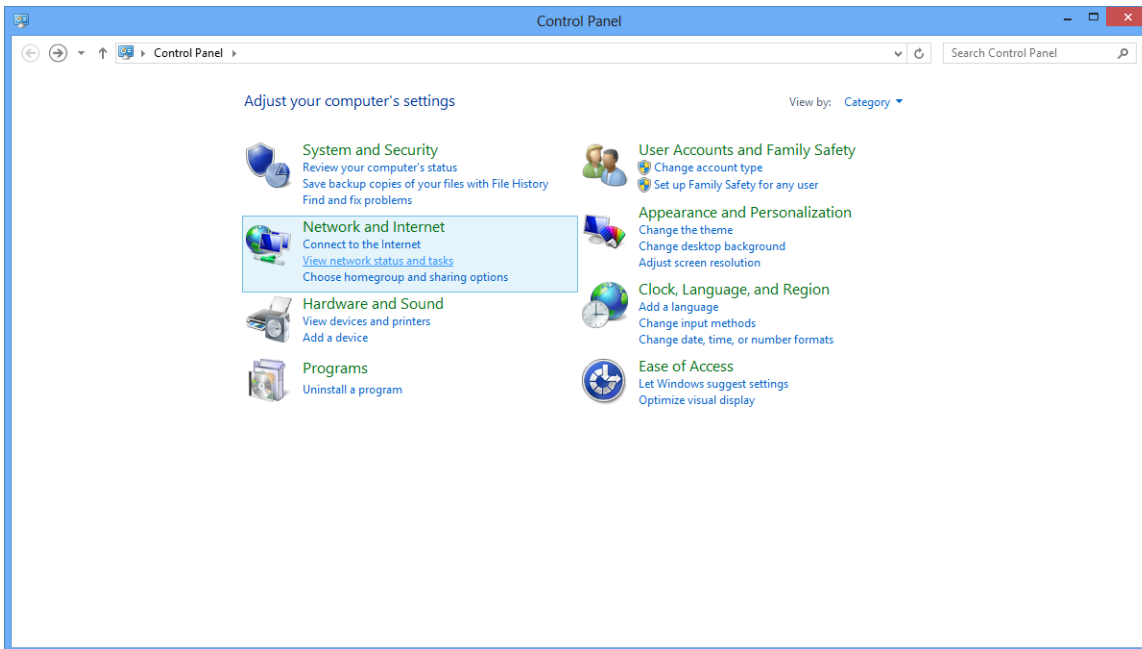
Dialing 555-1234...

Skip Cancel

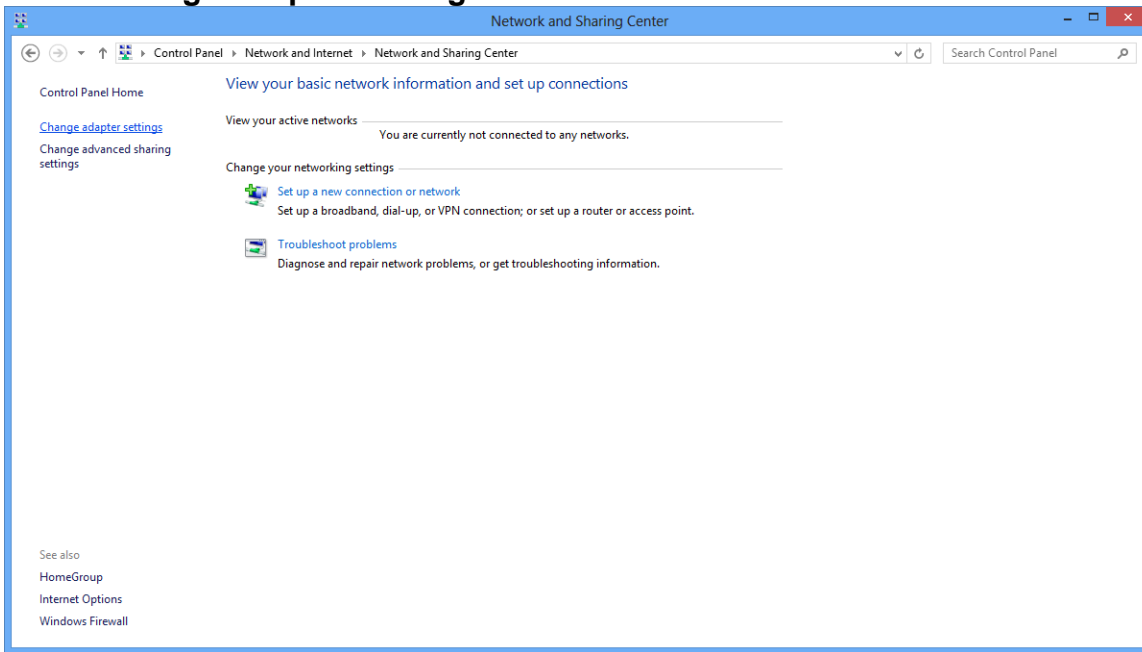
11. Click **Close**.



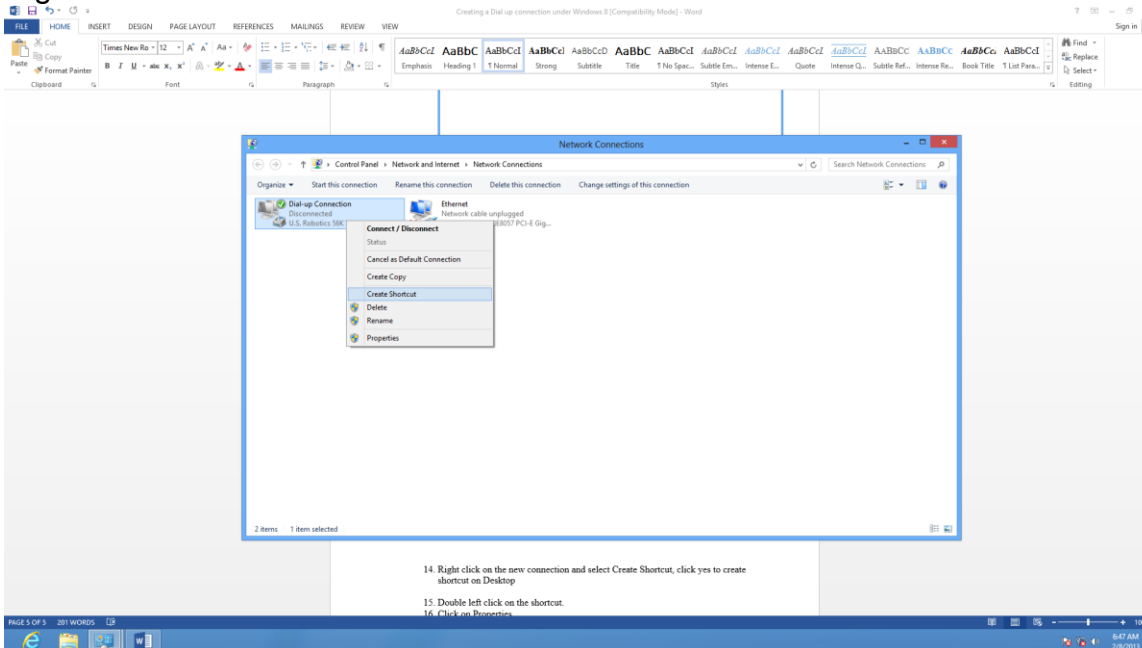
12. Select **View Network Status and Tasks**.



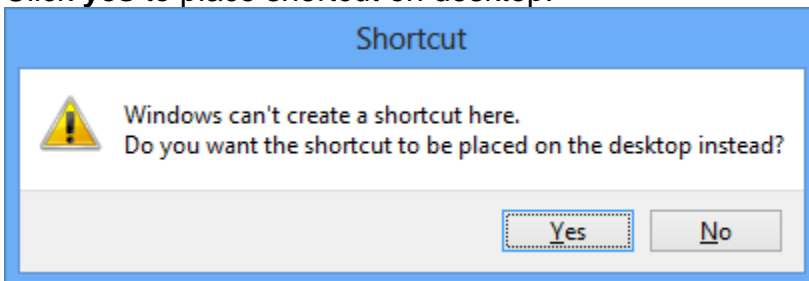
13. Select Change Adapter Settings



14. Right click on the new connection and select Create Shortcut.



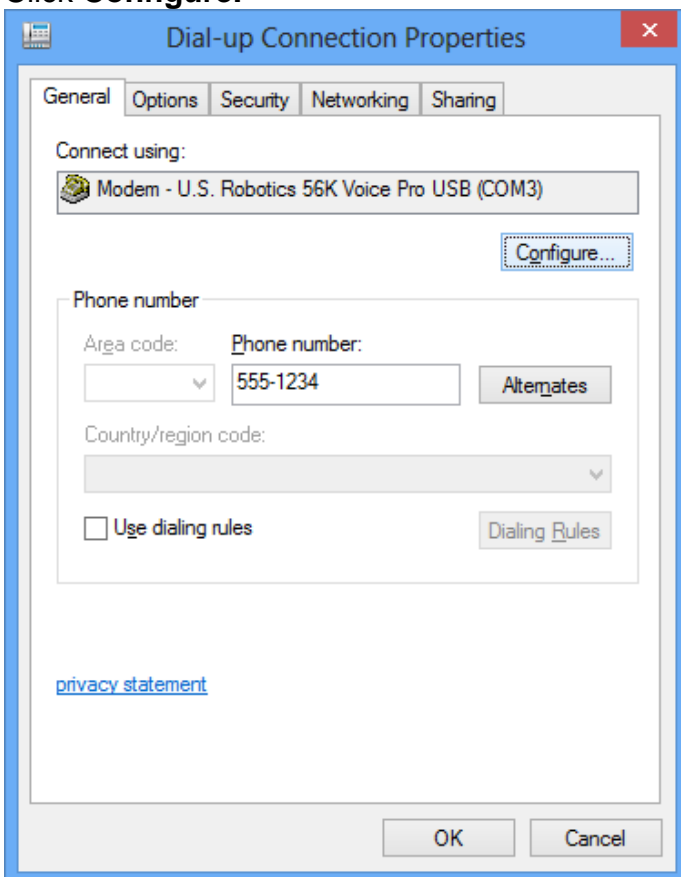
15. Click **yes** to place shortcut on desktop.



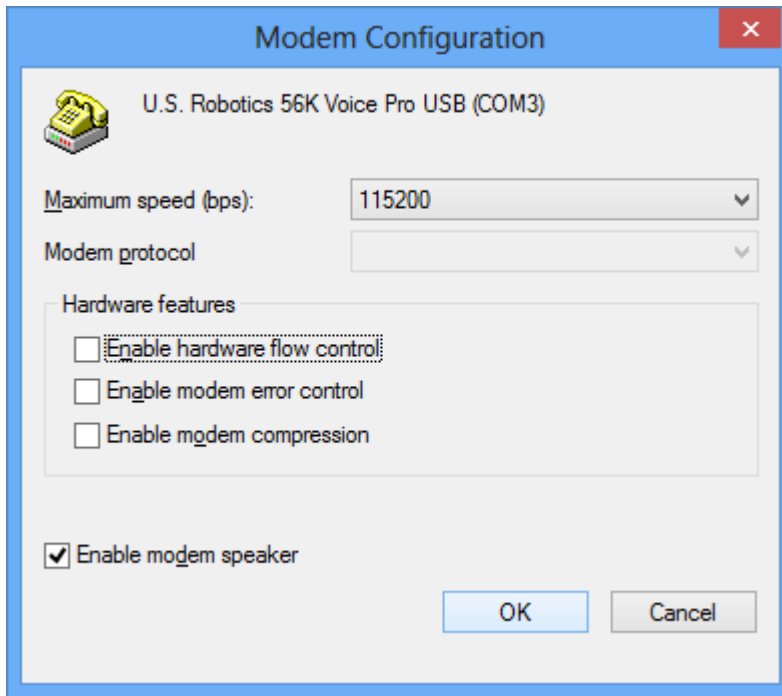
16. Double Left Click on the new icon. Right Click on the **Dial-up Connection** on the right and click on **View Connection Properties**.



17. Select your modem.
18. Click **Configure**.



19. Uncheck all **Hardware Features**.
20. Click **OK**. Click **OK** on the next screen.



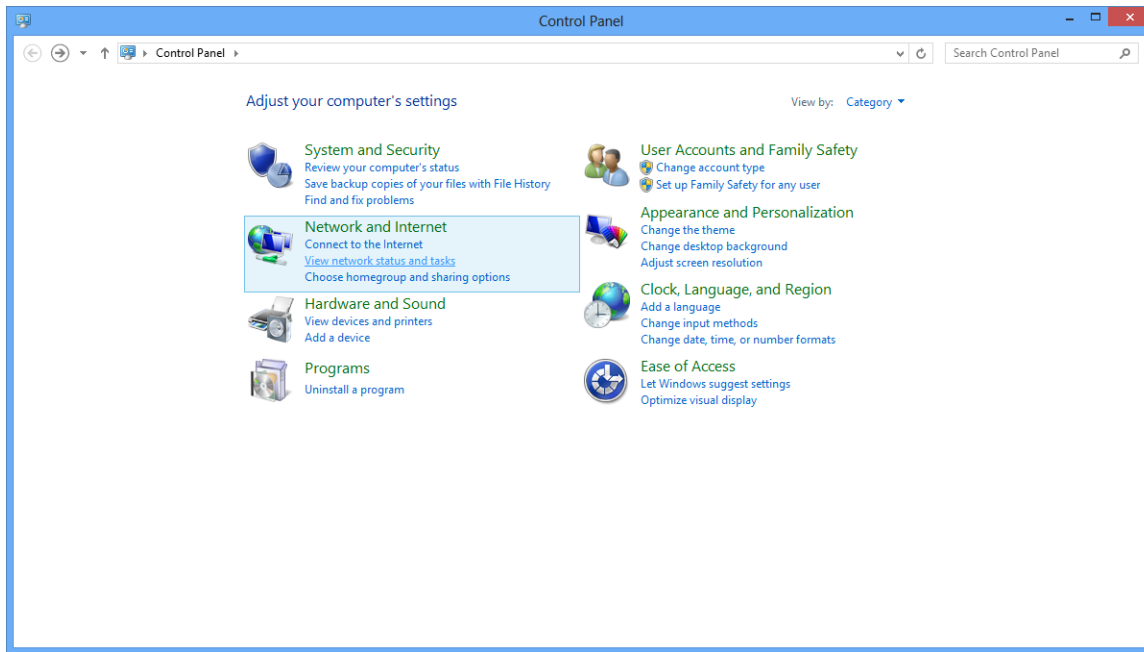
NOTE: The following steps (21 – 33) are for use with the RE-1 and RE-2.

21. Go to **SETTINGS**.

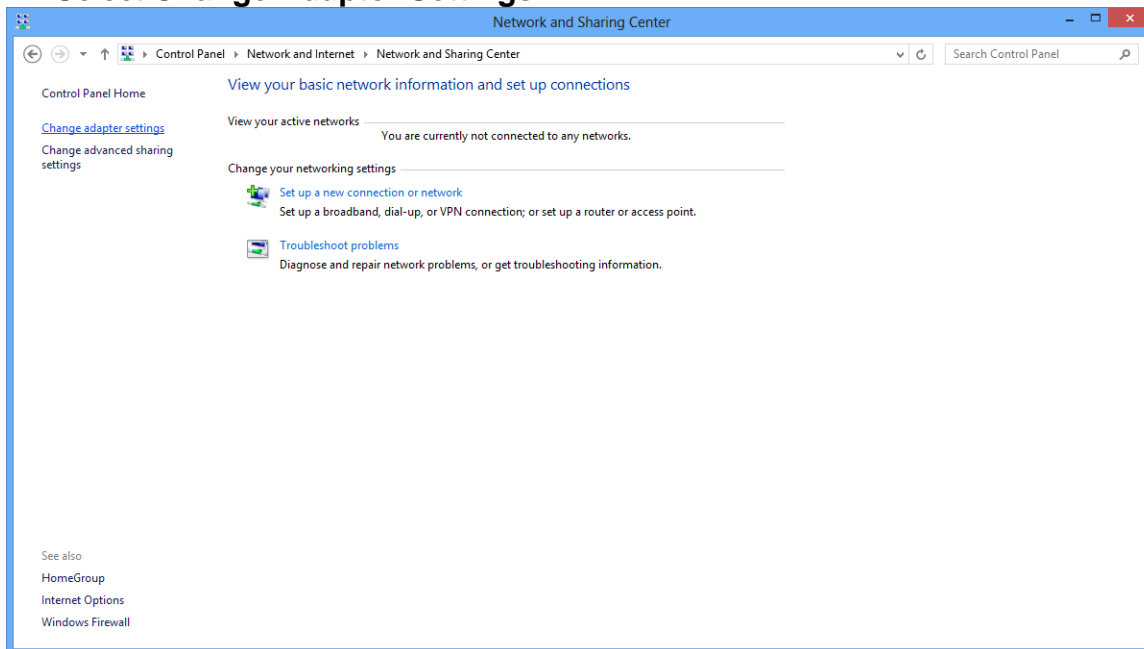
22. Click on **Control Panel**.



23. Select **View Network Status and Tasks.**

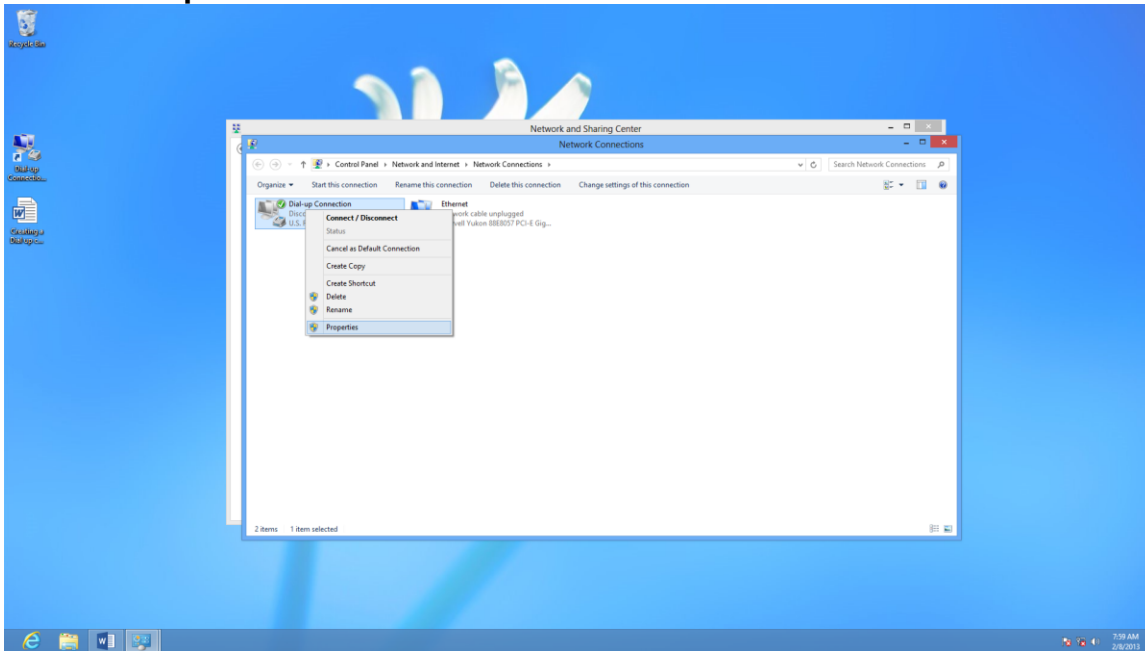


24. Select **Change Adapter Settings.**

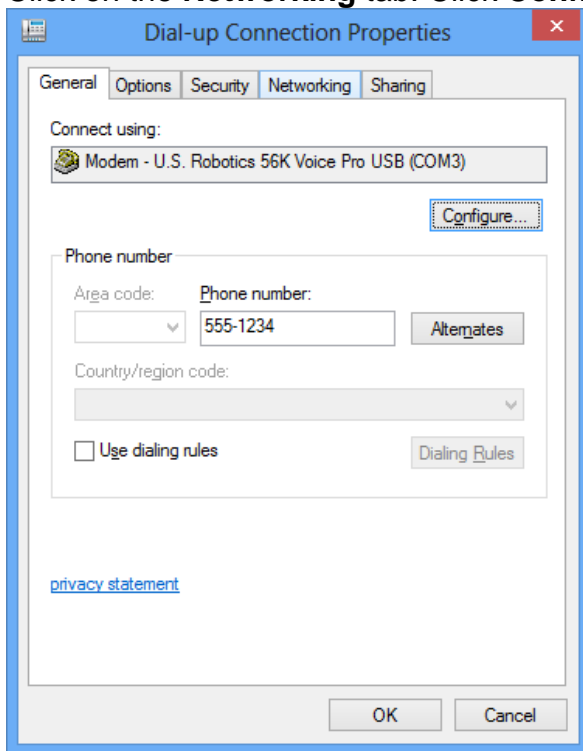


25. Right Click on **Dial-up Connection.**

26. Click **Properties**.

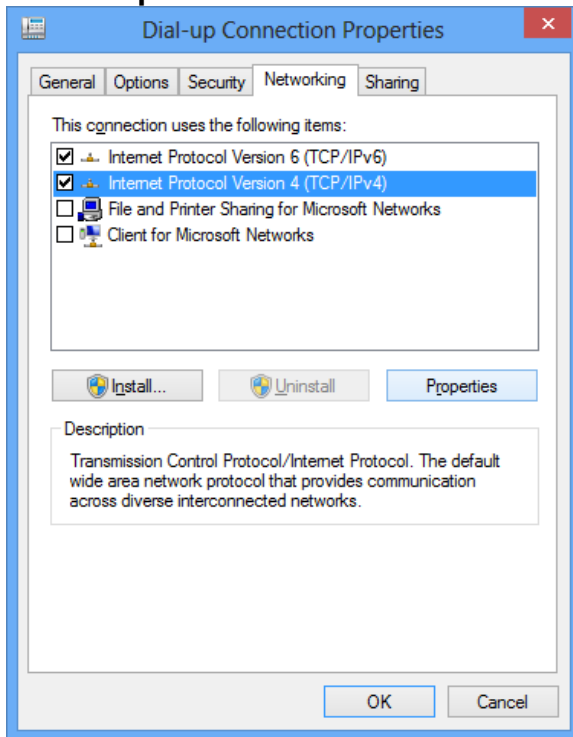


27. Click on the **Networking** tab. Click **Configure**.



28. Highlight **Internet Protocol Version 4 (TCP/IP)**

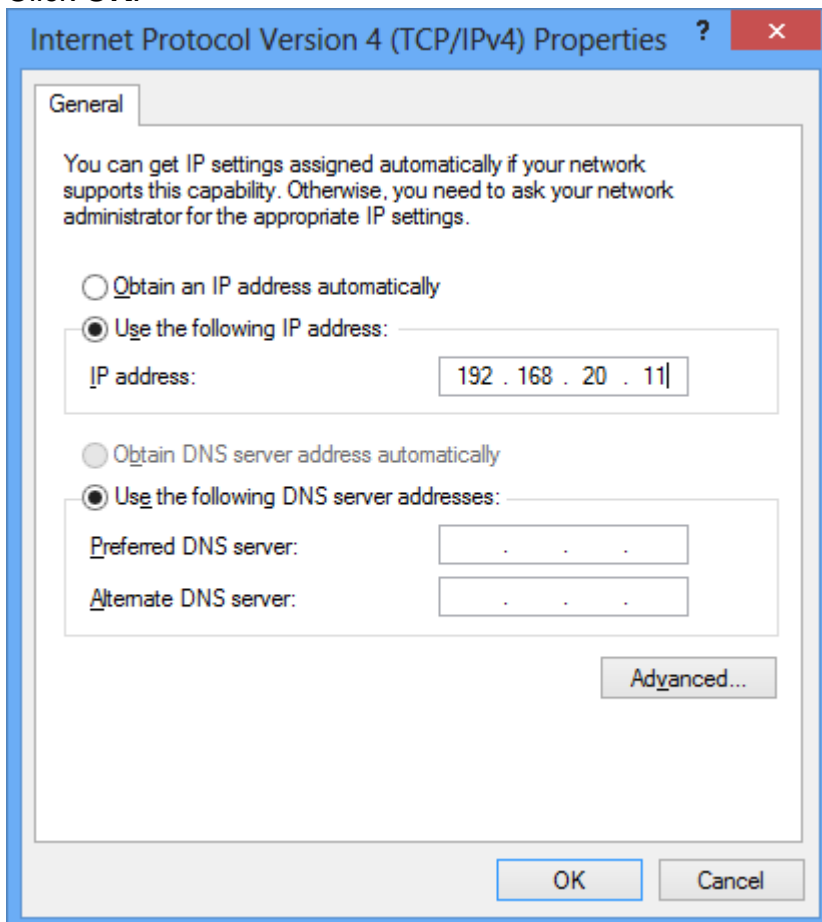
29. Click **Properties**



30. Click **Use the following IP address.**

31. Enter the IP address, 192.168.20.11.

32. Click **OK.**



33. Click **OK** on the next screen.

Note: All screen shots are from Windows 8 Enterprise Edition. Your screens may be different depending on the version of Windows 8 you have installed.