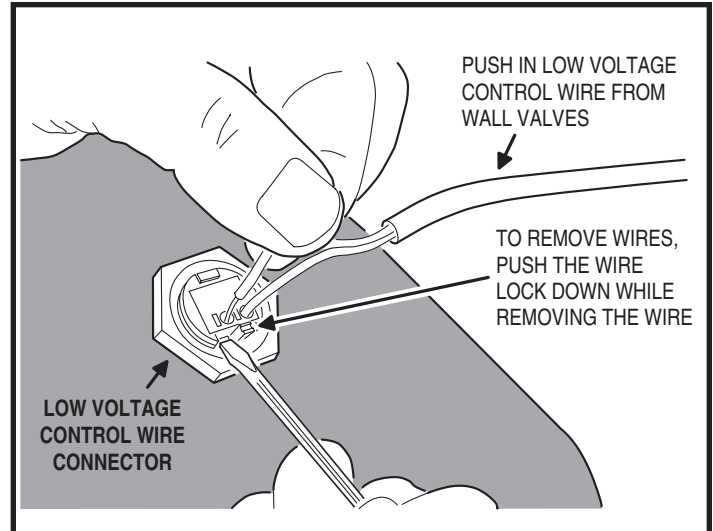


CONNECTOR CHANGE FOR RED SERIES AND FX3000 CENTRAL VACUUMS

Effective the first quarter of 2006, a revised control board assembly has been installed in the Model AV2500, AV3500, AV4500 and FX3000 Central Vacuums. These vacuums have a new low voltage control wire connector and are no longer shipped with control wire spade lugs taped to the outside of the unit.

To install the control wire to these units, strip the end of the two control wires and insert each wire into a hole in the connector. To remove the control wire from the connector, press on the connector's small wire lock levers to release the wire.



NEW CONTROL WIRE CONNECTOR



AV2500



AV3500



AV4500



FX3000