

PERS-2400B AND PERS-3600B REMOTE ACCESS SOFTWARE COMPATIBILITY

When programming either a PERS-2400B or PERS-3600B Console, be sure and use Version 2.3 or higher of the RA-2400 Remote Access Software.

Download the free software from the Linear Web Site at:
<http://www.linearcorp.com/downloads.html>

Find the link:

PERS-2400A, PERS-2400B Programming Software, or PERS-3600, PERS-3600B Programming Software
[RA-2400 Version 2.3 Remote Access Software .exe \(1.91MB\)](#)

Earlier versions of the RA-2400 software, do not support the CO compatible models. The software will quit the session, exiting the RA-2400 program if an attempt is made to program a unit that it does not support.

Linear PERS-2400B and PERS-3600B series have the ability to learn in Linear's new DXS-80 CO (Carbon Monoxide) Detectors, and provide unique "CO Gas Alarm", "Low Battery" and "Supervisory" reports to the Central Station from the console.

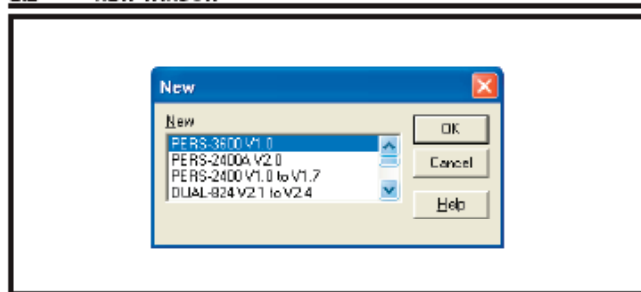
The Ademco Contact ID, 4x2 General, and 4x2 Point-to-Point codes as follows:

Event	Contact ID	4x2 General	4x2 Point-to-Point	Condition
CO Gas Alarm	151	3	By zone	Sensor detects CO
CO Low Battery	384	6	By zone	CO unit low battery detected
CO Supervisory	381	6	By zone	CO unit fails to check in *

* The "Supervisory" notification requires that supervision be enabled via RA-2400 software set-up for that client.

For additional information, please refer to the – RA-2400 Remote Access Software Reference Manual for Programming the (PERS-2400) or (PERS-3600) Personal Emergency Reporting System.

2.2 NEW WINDOW



When programming the unit, select an Account Profile template for the type of unit being programmed.

PURPOSE:

To select an Account Profile template for the type of unit being programmed.

Can earlier versions of Linear PERS Consoles be programmed with the Rev 2.3 RA-2400 Software?

The RA-2400 Version 2.3 is backward compatible, so the PERS programmer only has to have one version of the Software running on their system to program both old (PERS-2400A and 3600) and new (PERS-2400B and PERS-3600B) consoles.