

Create an AE-500 Dial-up Connection Using Windows 7

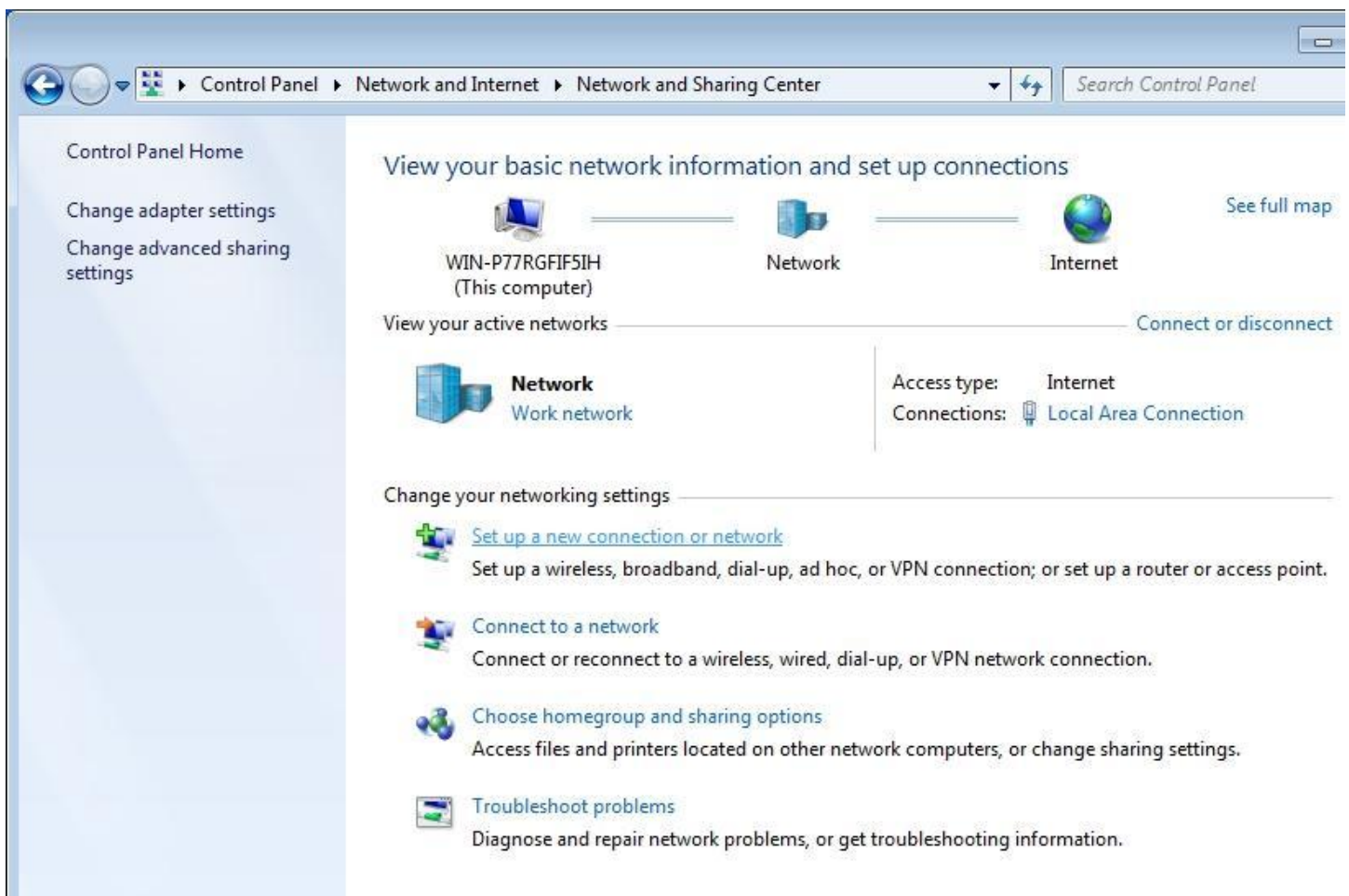
1. Click: the **Start** button
2. Click: Control Panel



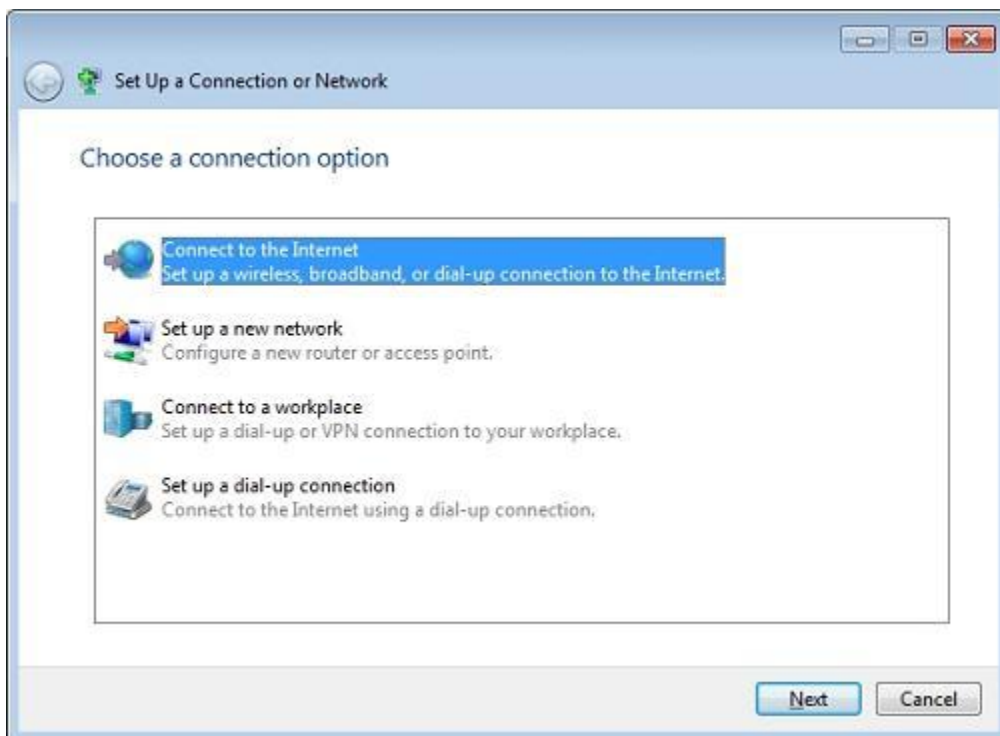
3. Click: View network status and tasks



4. Click: Set up a new connection or network



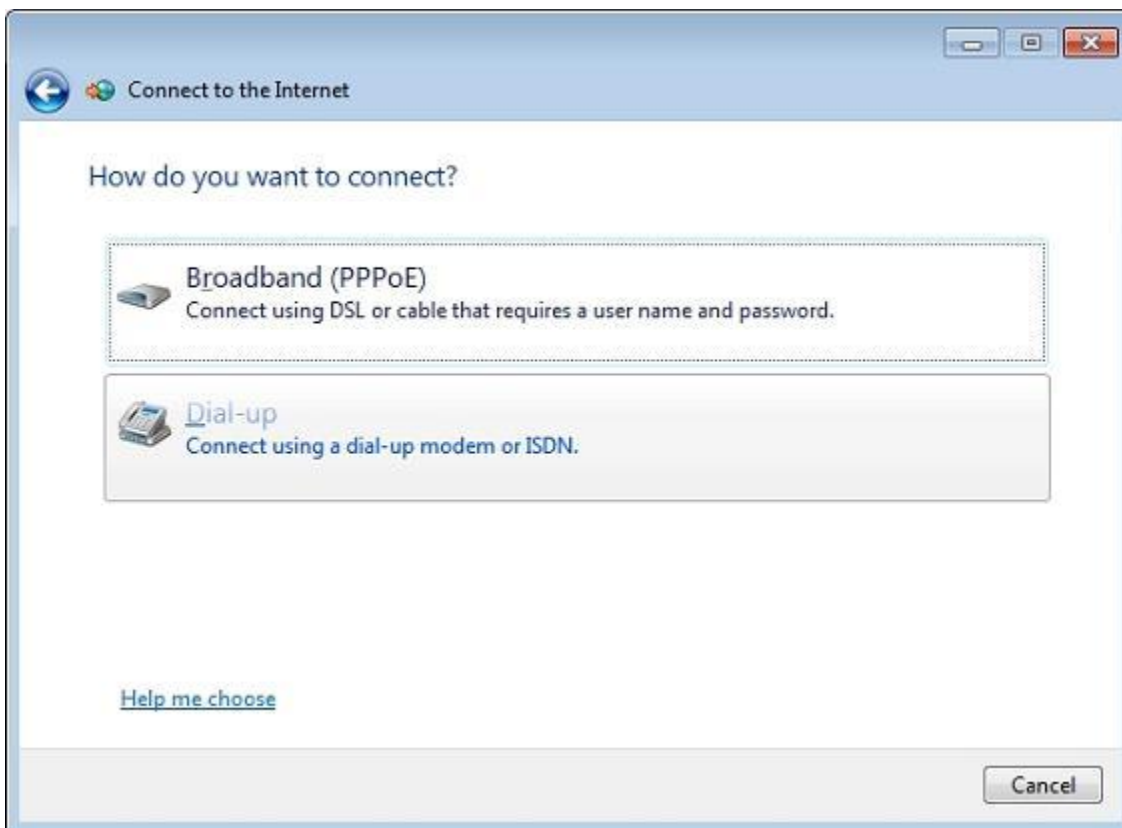
5. Click: Connect to the Internet then click **Next**



6. Click: Set up a new connection anyway



7. Click: Dial-up



8. Click: **Connect**

Connect to the Internet

Type the information from your Internet service provider (ISP)

Dial-up phone number: 1-800-555-1234 [Dialing Rules](#)

User name: Linear

Password: 123456

Show characters

Remember this password

Connection name: AE-500 Dial-up

Allow other people to use this connection
This option allows anyone with access to this computer to use this connection.

[I don't have an ISP](#)

Connect Cancel

9. Click: **Skip**

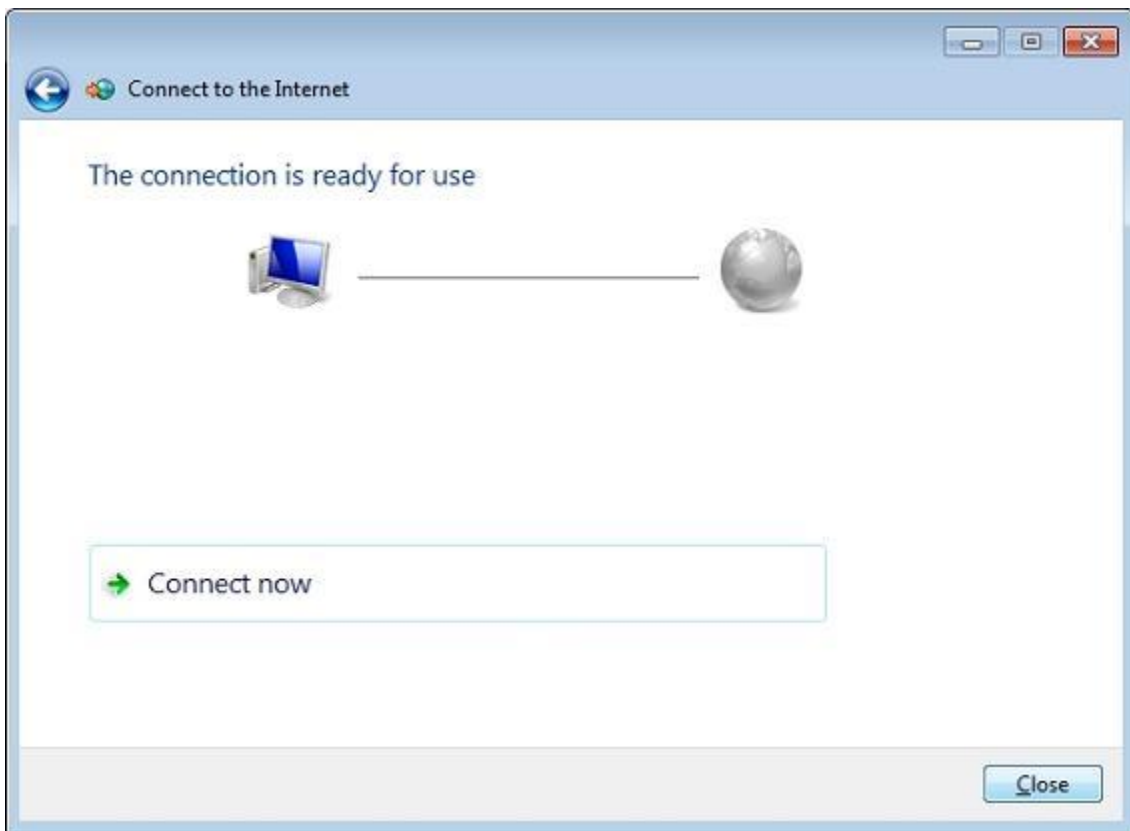
Connect to the Internet

Connecting to AE-500 Dial-up...

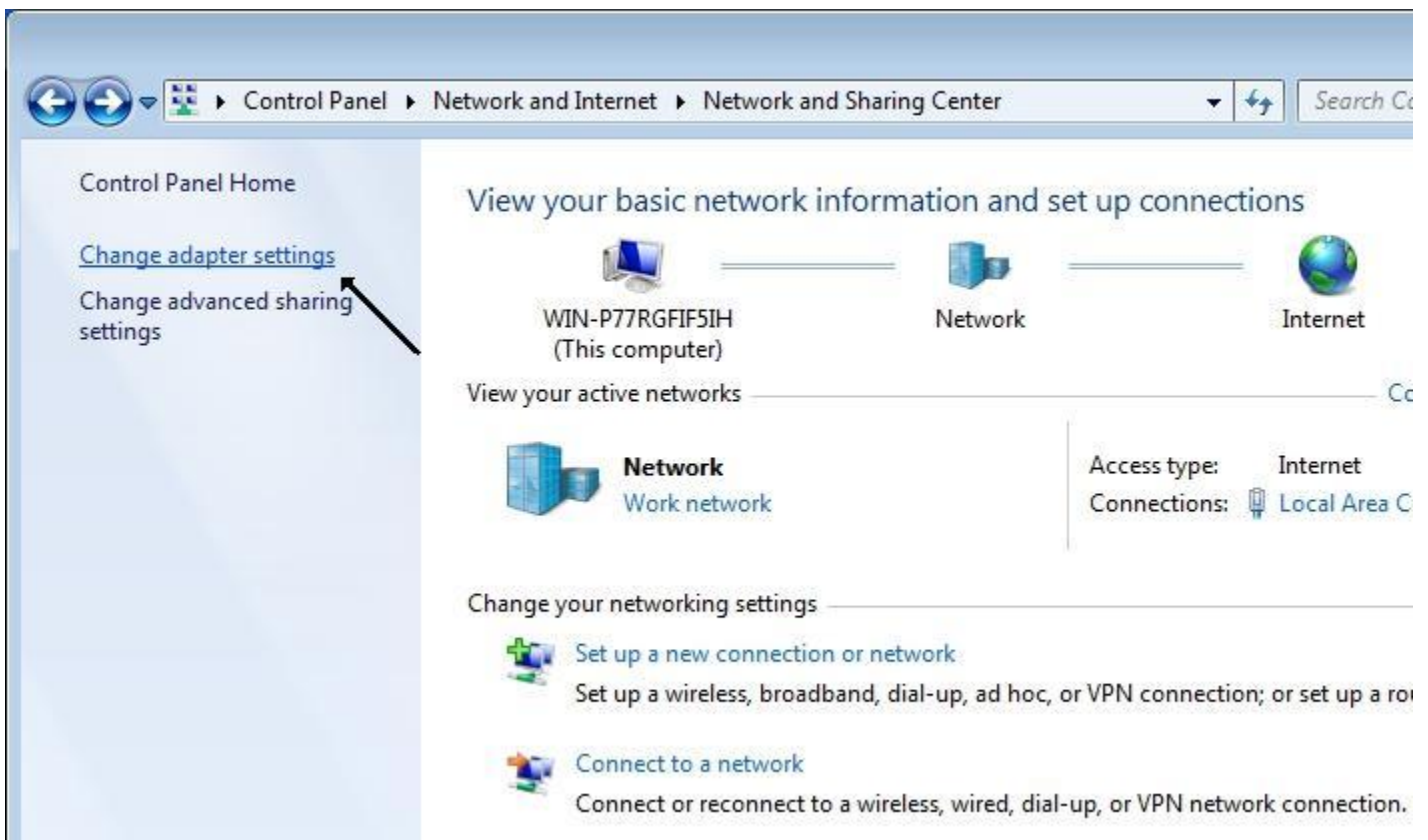
Dialing 1-800-555-1234...

Skip Cancel

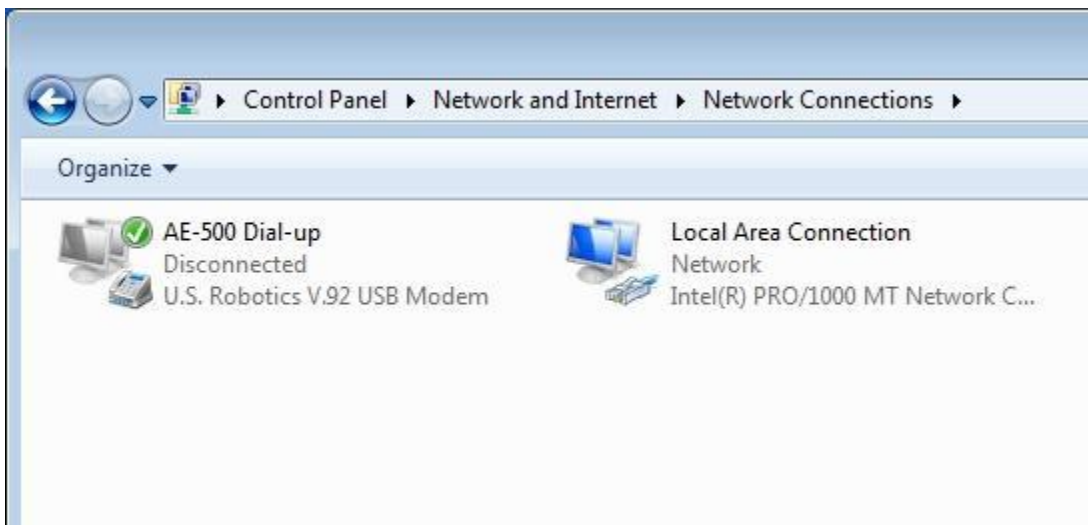
10. Click: **Close**



11. Click: Change adapter settings



12. Right click and drag the icon on to the desktop



Shortcut on desktop:



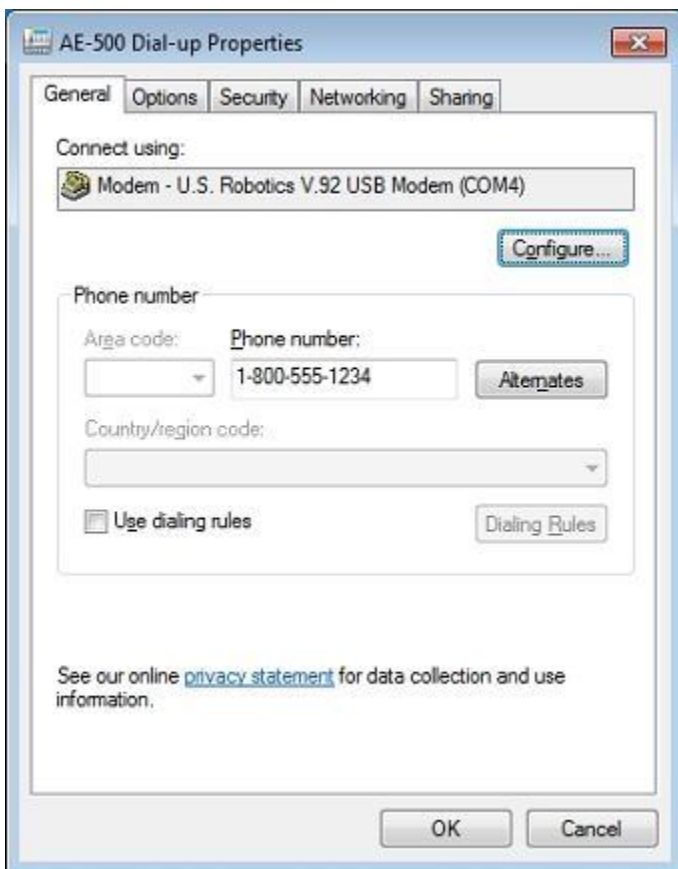
13. Double-click the shortcut on the Desktop to open the dialer



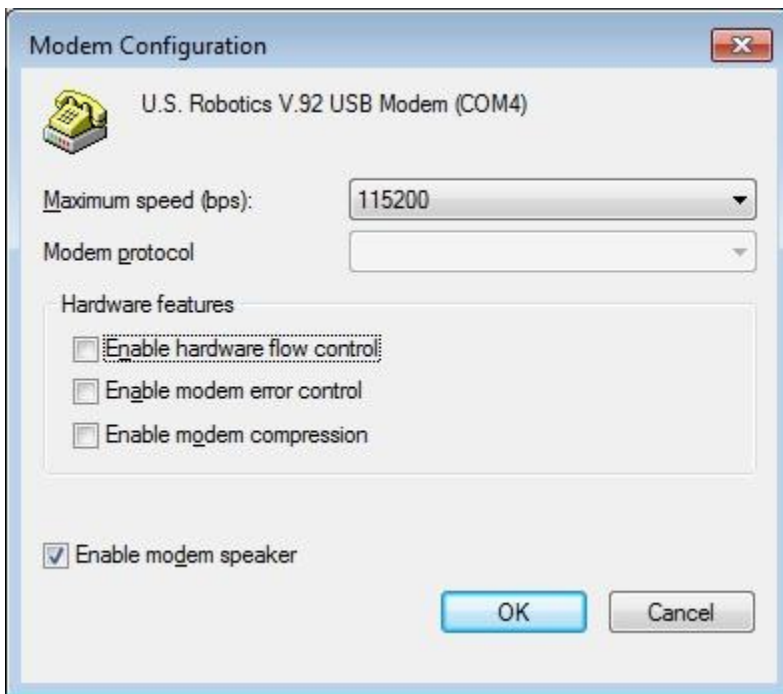
14. Click: **Properties**



15. Click: **Configure**



16. Uncheck Hardware features



17. Click Dial to connect

