



## Multi-Room Audio Distribution System

# ENC-REM

## Basic Remote Control

### Operation Instructions



USA & Canada (800) 421-1587 & (800) 392-0123  
(760) 438-7000 - Toll Free FAX (800) 468-1340  
[www.linearcorp.com](http://www.linearcorp.com)



## 1. PRODUCT DESCRIPTION

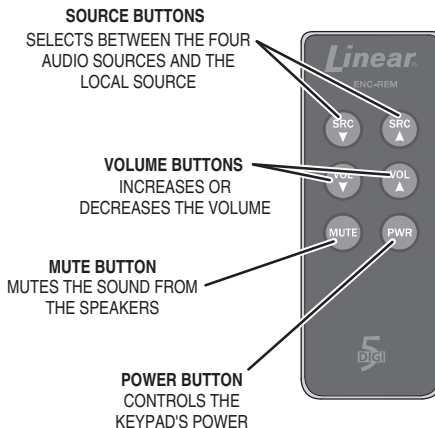
The Encore basic remote control (Model ENC-REM) is an infrared remote control for use with the Encore Multi-Room Audio Distribution System.

The remote control sends infrared signals to the infrared receiver in system keypads (Model ENC-DRS).

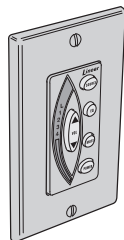
In addition to controlling the system's power, the basic remote can select the audio source, adjust the volume, and mute the sound in each room.

The remote is powered by a single Type 2025 coin cell lithium battery.

## 2. REMOTE CONTROL DETAILS

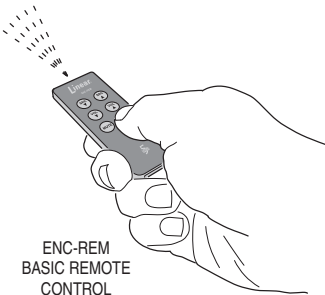


## 3. OPERATING REMOTE

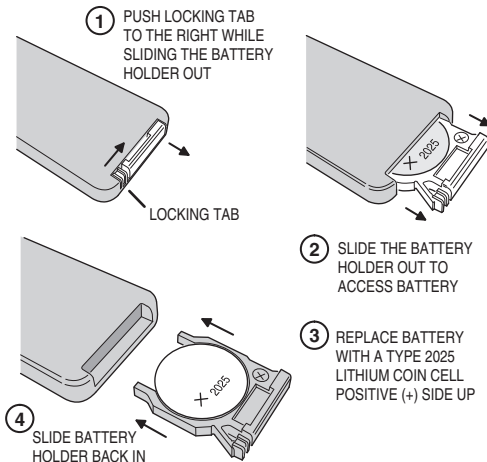


ENC-DRS KEYPAD

POINT THE REMOTE CONTROL AT THE KEYPAD AND PRESS THE DESIRED FUNCTION BUTTON



## 4. BATTERY REPLACEMENT



## LIMITED WARRANTY

This Linear product is warranted against defects in material and workmanship for twenty four (24) months. **This warranty extends only to wholesale customers** who buy direct from Linear or through Linear's normal distribution channels. **Linear does not warrant this product to consumers.** Consumers should inquire from their selling dealer as to the nature of the dealer's warranty, if any. **There are no obligations or liabilities on the part of Linear LLC for consequential damages arising out of or in connection with use or performance of this product or other indirect damages with respect to loss of property, revenue, or profit, or cost of removal, installation, or reinstallation.** All implied warranties, including implied warranties for merchantability and implied warranties for fitness, are valid only until the warranty expires. **This Linear LLC Warranty is in lieu of all other warranties express or implied.**

All products returned for warranty service require a Return Product Authorization Number (RPA#). Contact Linear Technical Service at 1-800-421-1587 for an RPA# and other important details.