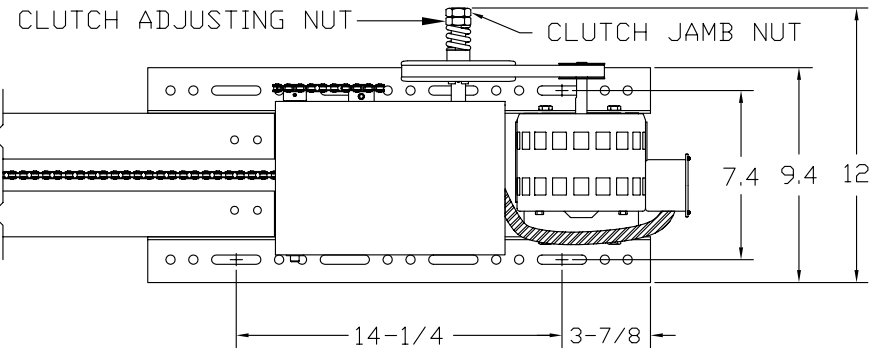
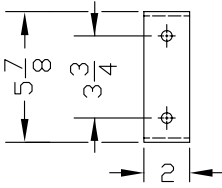


HIGH ARC OF DOOR
(5" CLEARANCE REQ'D.)

INTERNAL LIMITS
(LOCATED INSIDE CONTROL BOX)

	A *	B **	C **
10 FT DOORS	14 FT 2 IN	57-1/4 IN	55-1/2 IN
12 FT DOORS	16 FT 8 IN	66 IN	55-3/4 IN
14 FT DOORS	18 FT 8 IN	67-3/4 IN	91-1/2 IN

* ADD 1 IN FOR OPERATORS WITH BRAKE
** B AND C ARE SUGGESTED HANGER LOCATIONS, OTHER LOCATIONS ARE AVAILABLE



SPECIFICATIONS

MODEL : MD5011 HP: 1/2 VOLTS : 120 PHASE : SINGLE

- * UL AND CANADIAN UL LISTED
- * RIGID BASE PSC, 1/2 HORSEPOWER MOTOR
- * MOTOR OVERLOAD PROTECTION
- * HIGH AMP, INDUCTIVE LOAD RATED RELAYS
- * ELECTRO-MECHANICAL MODELS
 - * CLASS 2 (24 VOLT) CONTROL CIRCUIT
- * SOLID STATE CONTROL MODELS (SUFFIX "S")
 - * CLASS 2 (24 VOLT) CONTROL CIRCUIT WITH ADVANCED SWITCH SELECTABLE FEATURES

- * THREE BUTTON CONTROL: OPEN, CLOSE, STOP
- * WIRED TO ACCEPT REVERSING EDGE INPUT
- * HEAVY GAUGE, POWDER-COATED STEEL FRAME RAILS AND CONTROL BOX
- * V-BELT PRIMARY REDUCTION, FULL ROLLER CHAIN CHAIN SECONDARY REDUCTION
- * MANUAL DOOR DISCONNECT
- * FULLY ADJUSTABLE, INTERNAL, SHAFT DRIVEN LIMITS
- * OPTIONAL SOLENOID BRAKE

<small>TOLERANCE (EXCEPT AS NOTED)</small> DECIMAL X.X ±0.030 X.XX ±0.020 X.XXX ±0.010	c.p. ALLSTAR CORPORATION PO Box 240 Downingtown, PA 19335	
<small>ANGULAR</small> ±1°	<small>MATERIAL</small> 	<small>SHT</small> 1 OF 1 <small>©</small> 1998
<small>TITLE</small> DWG, DIMENSIONS/SPECIFICATIONS, MODEL MD5011	<small>DWG NO.</small> 101383	<small>REV</small> C