

Operational Check

After coding your transmitter, check the operation of your radio controls by moving approximately 45 feet back from the garage door or gate receiver then press the transmitter button. Operation at this distance should be reliable. However, environmental conditions and the location of the transmitter and receiver will affect distance.

- If the receiver is in the proximity of a metal beam or other obstruction it may be necessary to relocate the receiver to increase the operating range.
- If multiple receivers are mounted closer than 15 feet, blocking and interference may occur. Move the receivers further apart.
- If system does not work at any distance, check that the receiver terminals are connected to the proper operator terminals.
- If the HomeLink® transmitter does not activate the operator or distance is inadequate, verify proper operation using the hand-held transmitter. Contact your HomeLink® system provider for help with configuring the HomeLink® transmitter and to resolve distance problems when using the HomeLink® system.
- If the transmitter doesn't activate the operator check the coding on both the transmitter and receiver. The code setting must match **exactly**.
- If the distance is inadequate check the battery and replace if necessary.
- To maximize the operating distance move the transmitter to different locations in the car until a satisfactory distance is achieved. Vanity mirrors on sun visors will affect performance.

Manufacturer's Limited Warranty

Allstar warrants its radio controls to be free from defect in material and workmanship for a period of one (1) year from the date of purchase. To obtain service, contact your dealer.

To obtain service under this warranty the buyer must obtain authorization instructions for the return of any goods from Allstar before returning the goods. The goods must be returned with complete identification, with copy of proof-of-purchase, freight prepaid and in accordance with Allstar's instructions or they will not be accepted. In no event will Allstar be responsible for goods returned without proper authorization or identification.

Goods returned to Allstar for warranty repair within the warranty period, which upon receipt by Allstar are confirmed to be defective and covered by this limited warranty, will be repaired or replaced at Allstar's sole option, at no cost and returned pre-paid. Defective parts will be repaired or replaced with new or factory rebuilt parts at Allstar's sole option.

This limited warranty does not cover non-defect damage, damage caused by unreasonable use, damage caused by improper installation or care, vandalism or lightning, fire or excessive heat, flood or other acts of God (including, but not limited to misuse, abuse or alterations, failure to provide reasonable and necessary maintenance), labor charges for dismantling or reinstalling a repaired or replaced unit, or replacement batteries.

These warranties are in lieu of all other warranties, either expressed or implied. All implied warranties of merchantability and/or fitness for a particular purpose are hereby disclaimed and excluded. Under no circumstances shall Allstar be liable for consequential, incidental or special damages arising in connection with the use or inability to use this product. In no event shall Allstar's liability for breach of warranty, breach of contract, negligence or strict liability exceed the cost of the product covered hereby. No person is authorized to assume for Allstar any other liability in connection with the sale of this product.

This warranty gives you specific legal rights. Warranty effective after November 1, 2003.

c.p. Allstar Corporation, Downingtown, Pennsylvania 19335

For Technical Service Call 1-610-873-6900

⚠ WARNING

Unexpected door operations can cause personal injury or property damage.

This device complies with Part 15 of the FCC Rules and with RSS-210 of Industry Canada. Operation is subject to the following two conditions: (1) This device may not cause harmful interference, and (2) this device must accept any interference received, including interference that may cause undesired operation.



Challenger 310 Transmitter Installation Instructions

Replaces Stanley except "Secure-Code", Linear Delta 3 and Moore-O-Matic Transmitters

Product Features

The Challenger 310 Transmitter makes it possible to operate a single or group of remotely controlled devices such as a garage door opener, with a single transmitter.

Programming the Challenger 310 is done by simply:

1. Put the transmitter in program mode.
2. Select the button you wish to use.
3. Enter your 8 or 10 digit code.

Follow these simple instructions.

Please read the instructions completely before starting. Further instructions are available at www.allstarcorp.com

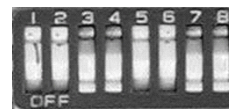
INSTRUCTIONS FOR REPLACEMENT TRANSMITTERS

Select the block of switches below that best matches the one in the transmitter or receiver that you are replacing.

*The grids display an **EXAMPLE** using the code shown on the switches to the left.

FOR LINEAR DELTA 3 AND MOORE-O-MATIC TRANSMITTERS

8 switches w/ On & Off



1	2	3	4	5	6	7	8
-	-	+	+	-	-	+	+

turn page Go to Step 1a...

FOR STANLEY TRANSMITTERS (except Secure Code)

10 switches w/ On & Off



1	2	3	4	5	6	7	8	9	10
+	-	+	-	+	-	+	-	+	-

OR



1	2	3	4	5	6	7	8	9	10
-	+	-	+	-	+	-	+	-	+

turn page Go to Step 1b...

⚠ WARNING

Disconnect power to operator before any installation or repair. Follow all instructions provided by the manufacturer of your operator.



Allstar Radio Controls are compatible with HomeLink®. HomeLink® is a registered trade mark of Johnson Controls, Inc.

When performing Programming Step 3a or 3b, the + and - buttons on Quik Code transmitter are used to enter the “dip-switch” settings of the transmitter being replaced. The “dip-switches” may indicate on/off, open/close or SV/SN.

Using a ‘+’ symbol to enter an on/close/SV “dip-switch” setting and a ‘-’ symbol to enter an off/open/SN setting, write the code that you matched from your transmitter or receiver in the grids below (see sample grids on page 1). Enter the symbols in the spaces to the right of the Quik Code button you want to use. The table below has a row for each one of the three buttons since it is possible to set a unique code for each button.

For a Delta 3 or Moore-O-Matic radio enter 8 “dip-switch” settings; for a Stanley radio enter 10 “dip-switch” settings.

ENTER DIP SWITCH SETTINGS BELOW IN THE SPACES NEXT TO THE QUIK CODE BUTTON THAT YOU WANT TO USE									STANLEY ONLY	
QUIK-CODE BUTTON	1	2	3	4	5	6	7	8	9	10

- PUT THE TRANSMITTER IN PROGRAM MODE -

Delta 3 or Moore-O-Matic



**If the LED goes out, start over.*



1a. First, PRESS AND HOLD the + button. The LED will turn on. **Next, WHILE CONTINUING TO HOLD the + button, press and hold the - button.** Continue to hold both buttons until the LED starts to blink (approximately 5 seconds). **Release both buttons while the LED is blinking.** The LED will blink two times and then remain on to confirm you are in programming mode.

Go to Step 2 ...

Stanley



**If the LED goes out, start over.*



1b. First, PRESS AND HOLD the - button. The LED will turn on. **Next, WHILE CONTINUING TO HOLD the - button, press and hold the + button.** Continue to hold both buttons until the LED starts to blink (approximately 5 seconds). **Release both buttons while the LED is blinking.** The LED will blink two times and then remain on to confirm you are in programming mode.

Go to Step 2 ...

- SELECT THE BUTTON YOU WISH TO USE

2. While the LED is on, **press the button you wish to use.** The LED will blink off once and then remain on.

Go to Step 3 ...



- ENTER YOUR 8 or 10 DIGIT CODE

Delta 3 or Moore-O-Matic

Stanley

3a. Enter the 8-digit code from the table pressing the buttons that correspond with the grid.

Go to Step 4 ...

3b. Enter the 10-digit code from the table pressing the buttons that correspond with the grid.

Go to Step 4 ...



4. After the 8 or 10-digit code is entered, the LED will blink twice to confirm a valid code and remain off.

Go to Step 5 ...



5. Repeat the procedure for the remaining buttons. (if required)

IMPORTANT
The **SAME CODE** must be set on both the transmitter and receiver. The controls will not function if the codes are mismatched.

WARNING

Keep transmitters and remote controls out of the reach of children. Do not let children play with or use the transmitter or remote controls. Unexpected door operations can cause personal injury or property damage. Do not place transmitter where the buttons can be accidentally or unintentionally activated.

Installing the Transmitter

The transmitter is supplied with a metal clip which may be used to attach the unit to a sun visor. If the clip is used, slide it into the recess provided on the back of the transmitter case until the snaps on the case fit around the clip. If the transmitter is installed in a pocket in your car, follow all the manufacturer’s instructions.



Battery Replacement

The Challenger transmitter is provided with two factory installed 3-volt batteries which should be replaced after two years of normal use. The transmitter code is retained in permanent memory and will not be lost during battery replacement. To replace the batteries, remove the back of the case with a small screwdriver. Carefully slip the batteries out of the holders and replace with fresh CR2032 3-volt batteries. The “+” on the batteries must point away from the circuit board. Replace the back of the cover and resume normal use.

Improper transmitter installation or use may cause intermittent operation which can result in unexpected door operations.