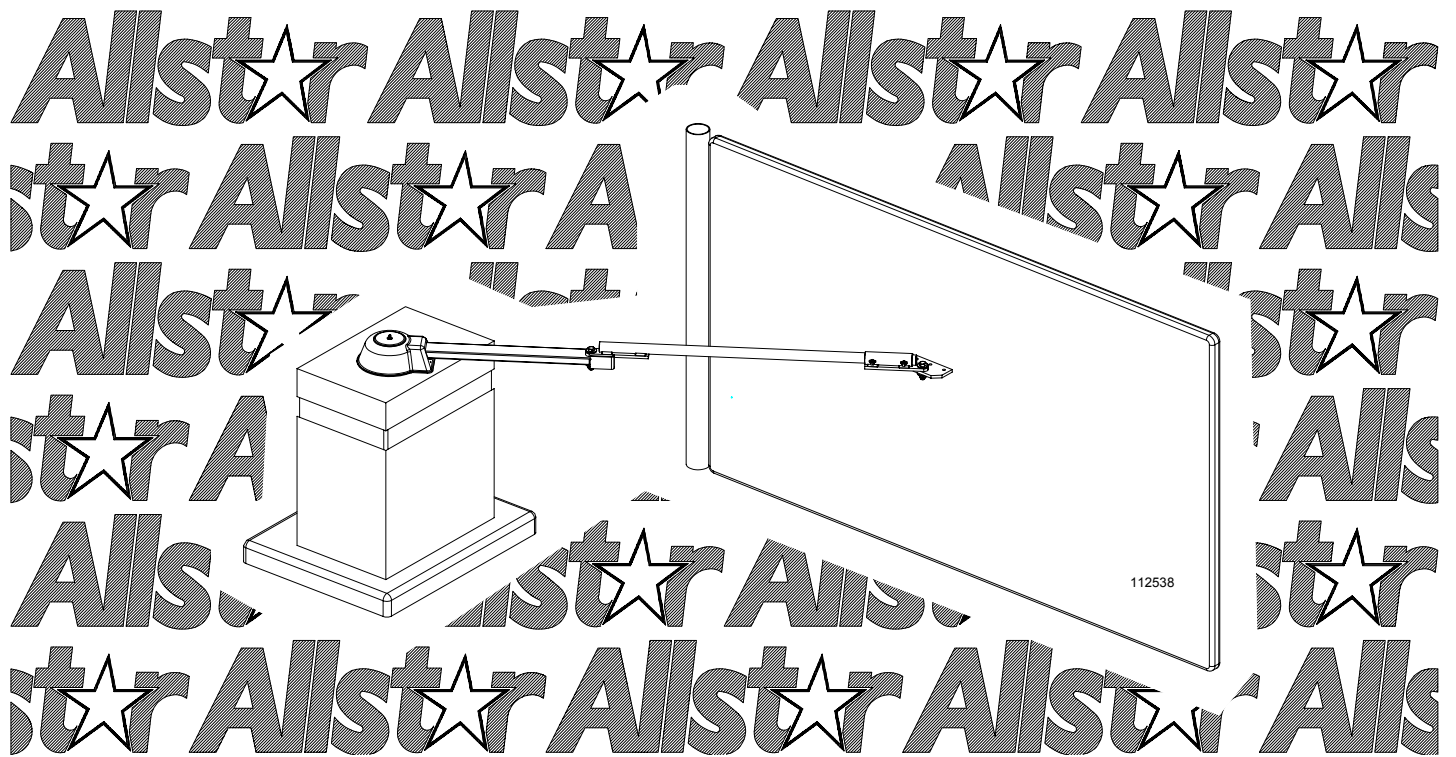


INSTALLATION AND OWNER'S MANUAL

GATE STAR 6000

***Model GS6000 - Heavy Duty Commercial
Vehicular Swing Gate Operator***



EXPLODED VIEW / PARTS LIST

-

TECHNICAL SPECIFICATIONS

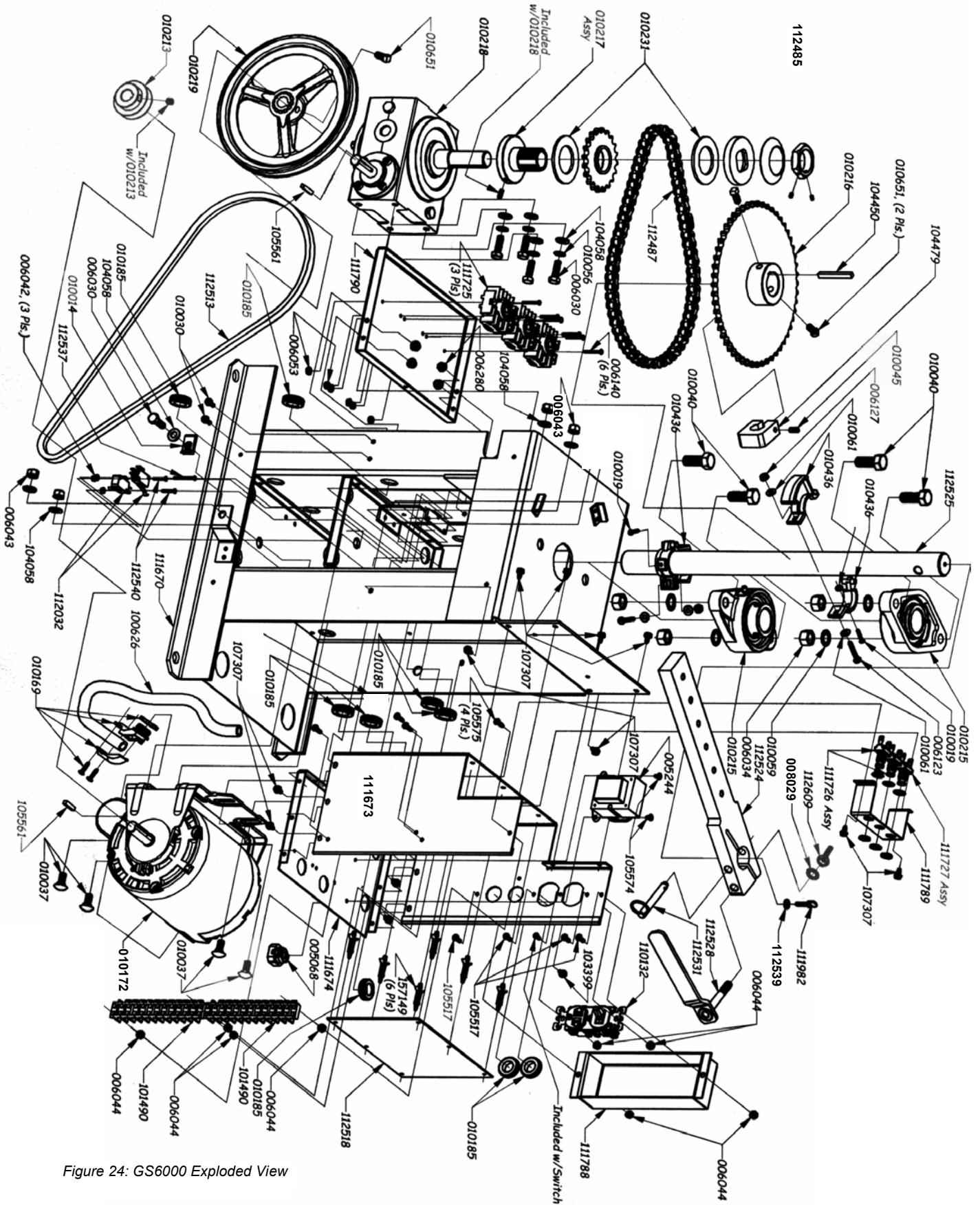


Figure 24: GS6000 Exploded View



PART #	DESCRIPTION
005068	CON, 3/8 FLEX Conduit, Straight, AMP 207370-1
005244	Transformer, 120V-24V, 50/60 Hz, Class 2, 40VA
006030	Screw, 5/16-18 x 1, ZI
006034	Nut, 1/2-13, Hex
006042	Nut, 4-40, Hex, Captivated Lock Washer
006043	Nut, 5/16-18, Hex, Captivated Lock Washer
006053	Nut, 6-32, Hex, Captivated Lock Washer
006044	Nut, 8-32, Hex, Captivated Lock Washer
006123	Screw, 10-24 x 1-1/4, PN PH MA
006127	Nut, 10-24, Hex, Captivated Lock Washer
006140	Screw, 6-32 x 1, RH MA
006280	Nut, 10-32, Hex, SR FL
008029	Washer, 3/8, INT TTH Lock, 10T
010014	Nut, 5/16-18, U, Tinnerman
010019	Screw, 6-32 x 3/4, PH PN MA
010030	Screw, 10-32 x 1/2, Hex SL WA
010037	Screw, 5/16-18 x 3/4, CR, ZI
010040	Screw, 1/2-13 x 1-1/4, HX
010045	Screw, 1/4-20 x 1/2, SK, Set
010056	Washer, 5/16, INT TTH Lock
010059	Washer, 1/2, INT TTH Lock
010061	Washer, #10, Flat
010169	Connector, Conduit, N, 90 Degree
010172	Motor, 1/2HP, 115V, 56, ODP, PSC, GATE, Leeson
010185	Grommet, 5/8 ID, for 7/8 Hole
010213	Pulley, 2 IN V Belt, 5/8 IN BORE
010215	Bearing, PB, 1.25 x 1-11/16TB, CT IR
010216	Sprocket, 50B54, 1-1/4 Thru Bore, 1/4 Key
010217	Torque Limiter Assembly
010218	Speed Reducer, 60:1
010219	Pulley, 8", V-Belt, 5/8 Bore
010231	Clutch Disk, Torque Limiter
010436	Actuator, Limit Cam
010651	Screw, 5/16-18 x 5/8, SQ Head, Set
100626	Conduit, Non-Metallic, 1/4

PART #	DESCRIPTION
101490	Terminal Block, Barrier Type, 11 POS
103399	Screw, 10-32 x 3/8, HX SL WA, T/F, Green
104058	Washer, 5/16, Flat, SAE
104450	Key, 1/4 x 1/4 x 2L
104479	Arm Stop, Heavy Duty SWGO
105517	Screw, 8-32 x 1/2, PH RD MA
105561	Key, 3/16 x 3/16 x 1
105574	Screw, 8-32 x 1/4, PH PN, T/1, S/T
105575	Screw, 8-32 x 5/8, PH PN, T/1, S/T
107307	Screw, 10-24 x 3/8, HX SL WA, T/F, SS
110132	Receptacle, Duplex, Outlet/Switch, 120 VAC
111673	Control Box, GS6, HDSWG
111674	Control Box Bottom, GS6, HDSWG
111725	Socket, Octal, 11 Pin, DIN/Panel Mounting
111726	Switch, Push Button, SPST, NO, Black
111727	Switch, Push Button, SPST, NO, Red
111788	Bracket, AC Cover, High Voltage, GS6
111789	Bracket, Panel, Push Buttons, GS6
111790	Frame Pan, Loop Socket Mounting, GS6
111982	Screw, #10-32 x 3/4, Spade Head, SS
112032	Limit Switch, SPDT, Simulated Roller Lever
112484	Frame, GS6000, No Components
112487	Chain, #40, Roller, Nickel, 65P w/Master Link
112513	Belt, V, 4L440, Industrial
112518	Motor Control Board, CGO, 120V, GS6, CGA2K
112524	Arm, Crank, GS6, 1.25 Diameter Shaft
112525	Shaft, Output, GS6, Clevis Pined, 1.25 x 19.36
112528	Handle Assy, Release, 3/8-16, GS6 Crank Arm
112531	Pin, Ring Grip, 3/8 x 2.3, Quick Release
112537	Screw, 4-40 x 1-1/4, PHPM, ZI
112539	Washer, #10, Load-Distrib, 0.203 x 0.688 x 0.046
112540	Screw, 4-40 x 3/4, PHPM, ZI
112609	Wing Nut, 3/8-16 UNC-2B, S/S
157149	Standoff, PCB, 3/4IN

GATE ARM EXPLODED VIEW AND COMPONENT LIST

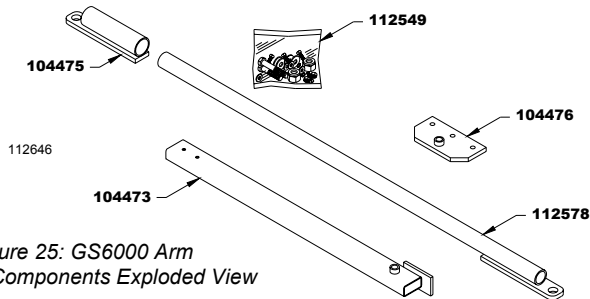


Figure 25: GS6000 Arm Components Exploded View

GATE ARM COMPONENTS

PART #	DESCRIPTION
104473	Arm, Crank Extension, GS6, 1 x 2 x 26.5
104475	Fitting, Swing Gate Arm, 1-5/8 x 8
104476	Bracket, Swing Gate, 3 x 6
112549	Hardware Assy, Swing Arm, GS6000
112578	Arm, SWG Gate, Fixed Plate, 1.315 OD x 42L

UNILLUSTRATED COMPONENT LIST

PART #	DESCRIPTION
010291	Rain Seal Rubber Ring
104442	Rain Seal Plate
104779	Antenna, Radio Receiver, FC, 10 Inch
110555	Receiver, Radio, MVP-1Channel, 318 MHz, 24 VAC

PART #	DESCRIPTION
111805	Turret Cover, GS6 Swing Gate Arm
112435	Access Door Assembly, Cover, GS6
112536	Manual, Install / User, GS6000
112666	Cover, Operator, Complete w/RainSeal & Access Door



PHYSICAL

PAD: 24W x 30D x 3H

OVERHEAD CLEARANCE: 26 Inch Minimum

UNIT SIZE: 14 Wide x 19 Deep x 27-1/2 High

FRAME: Welded steel, Coated to UL Standards

COVER: Molded Polyethylene

SHIPPING WEIGHT: 200 lbs.

ELECTRICAL

PRIMARY VOLTAGE: 115 VAC, 60 Hz

ELECTRICAL SOURCE: One 3-Wire 15 AMP Service per

CONTROL VOLTAGE: 12/24 VDC

RADIO RECEIVER 24 VAC

MOTOR: 1/2 HP, 4.4 AMP PSC, Instant Reversing

DRIVE

DRIVE SYSTEM: 60:1 Gearbox

TORQUE LIMITER: Mounted on Output Shaft,

OUTPUT SHAFT: 1-1/4 Diameter Ball-Bearing Mounted

LIMITS: Independent Open & Close; Displaced

CAPACITIES

MAX. GATE WEIGHT: 1100 lbs.

MAX. GATE WIDTH: 18 Feet

MAX. CYCLES PER HOUR: 60 Open/Close per Hour

GATE SPEED: 13-15 Seconds for 90° Opening

Specifications subject to change without notice. Consult the factory.

MANUAL RELEASE INSTRUCTIONS

TO OPERATE THE GATE MANUALLY:

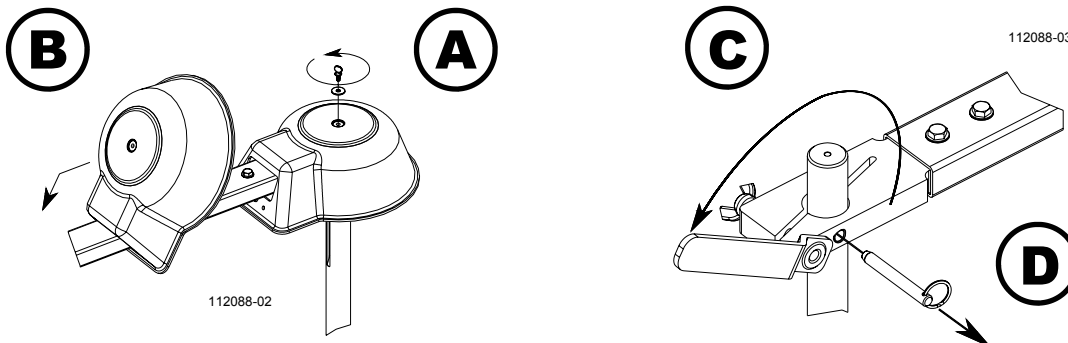
Action A - Unscrew the thumb screw that retains the turret cover.

Action B - Slide the turret cover down the gate arm an appropriate length to complete Actions C & D.

Action C - Rotate the release handle 180 degrees away from the gate arm assembly.

Action D - Pull the release pin completely out of the arm assembly.

The gate can now be moved manually.



Reverse above to put the operator back into automatic service.