

# DMC-10 Intercom System User's Guide

## Intercom Operation

### Greeting Visitors at the Door

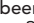

#### Door Call

When visitors arrive, they push the door station button to announce their arrival. Pressing the door station's button sounds a chime on all stations (unless the station is set to Do-not-disturb Mode).

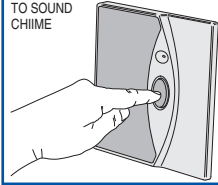
#### Door Answer

To communicate with the visitor at the door station, press and hold the room or patio station's **DOOR** button while speaking. Release the **DOOR** button to listen to the visitor for 25 seconds. Press and hold the **DOOR** button again at any time to continue talking to the visitor, each time the **DOOR** button is released, the listening time will be extended another 25 seconds.

#### Door Unlock

If a door release has been installed, pressing the  button on a room station will activate the door release for four seconds. The door release will stay activated as long as the  button is pressed.

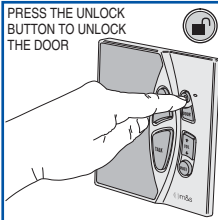
PRESS BUTTON ON DOOR STATION TO SOUND CHIME



PRESS AND HOLD THE DOOR BUTTON TO TALK TO THE VISITOR



PRESS THE UNLOCK BUTTON TO UNLOCK THE DOOR



### Communicating Throughout the Home

#### Talk Button

To communicate with other people at room or patio stations, press and hold the room station's **TALK** button while speaking. Release the **TALK** button to listen to all other room and patio stations for 25 seconds (except stations in Privacy Mute or Do-not-disturb Modes). Press and hold the **TALK** button again at any time to continue talking, after the **TALK** button is released, the listening time will be extended another 25 seconds.

#### Hands-free Reply Direction

Either person can change the direction of the hands-free conversation by pressing and holding their **TALK** button while speaking. After any **TALK** button is released the other person will be able to reply hands-free during the 25 second listening period (except after a **TALK** button has been pressed on a patio station).

#### Mute/Cancel

The communication session can be canceled at any time before the 25 second listening period expires by pressing the **MUTE** button.

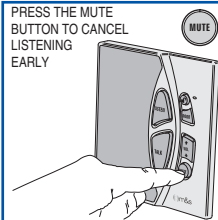
PRESS THE TALK BUTTON WHILE SPEAKING



RELEASE THE TALK BUTTON TO LISTEN  
HANDS-FREE REPLY LASTS 25 SECONDS



PRESS THE MUTE BUTTON TO CANCEL LISTENING EARLY



### Communicating from the Patio

#### Patio Talk Button

To communicate with people inside, press and hold the patio station's **TALK** button while speaking. Release the **TALK** button and wait for a reply from the inside stations. Press and hold the **TALK** button again at any time to repeat the call if it was unanswered. **For security and privacy, the patio station will not trigger hands-free reply from room or other patio stations.**

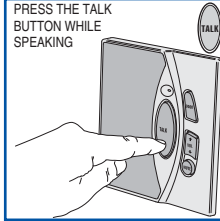
#### Room Talk Button

The person at a room station (or another patio station) must always press **TALK** to respond to a patio station. Each time the room station's **TALK** button is released, the listening timer is started and the room station will listen to the patio station and all other stations for 25 seconds (except stations in Privacy Mute Mode or Do-not-disturb Mode).

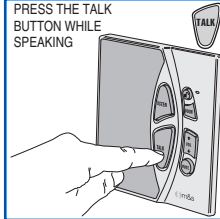
#### Patio Privacy

To prevent neighbors from hearing private inside intercom conversations, reduce the patio station's volume when it is not in use.

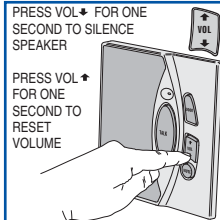
PRESS THE TALK BUTTON WHILE SPEAKING



PRESS THE TALK BUTTON WHILE SPEAKING



PRESS VOL+ FOR ONE SECOND TO SILENCE SPEAKER



PRESS VOL+ FOR ONE SECOND TO RESET VOLUME

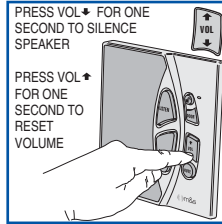
# DMC-10 Intercom System User's Guide

## Intercom Features and Special Modes

### Intercom Features

#### Volume Control

Volume at each station can be set with its **VOL** button. Each momentary **VOL↑** press increases, or **VOL↓** press decreases, the station's volume. Pressing and holding the **VOL↓** button for one second will silence the station's speaker (**VOL** button stays lit). Pressing and holding the **VOL↑** button for one second returns the volume to its previous level.



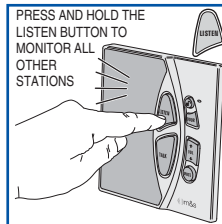
#### Hands-free Reply

Room stations will automatically listen to all other room and patio stations for 25 seconds after the room station's **TALK** button is released (except for stations in Privacy Mute Mode or Do-not-disturb Mode). This allows for a "hands-free" reply from the person being called. This also applies when communicating with door stations using the room or patio station's **DOOR** button.



#### Quick Listen

To momentarily listen to all of the room and patio stations without making a call, press and hold the room station's **LISTEN** button. This mode **WILL NOT** listen to stations in Privacy Mute Mode or Do-not-disturb Mode.



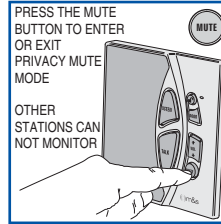
### Privacy Modes

#### Privacy Mute Mode

For privacy, room and patio stations can be set to prevent monitoring from other stations.

To enter or exit Privacy Mute Mode, momentarily press the station's **MUTE** button. In Privacy Mute Mode the **MUTE** button lights.

Regular intercom operation still functions in Privacy Mute Mode.

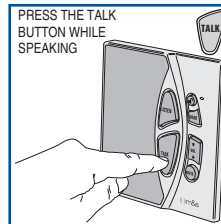
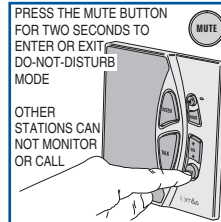


#### Do-not-disturb Mode

For privacy and silence, room and patio stations can be set to prevent monitoring and calling from other stations.

To select Do-not-disturb Mode, press and hold the station's **MUTE** button for two seconds. In Do-not-disturb Mode the **MUTE** and **VOL** buttons light. To exit Do-not-disturb Mode, press the **MUTE** button again.

The station can still perform regular intercom communications if the call is made from the station in Do-not-disturb Mode.



### Constant Modes

#### Monitor Mode

Monitor Mode is typically used for monitoring a baby or other sounds in a room. When a room or patio station is set to Monitor Mode, the station's microphone is always on. Set other stations to Listen Mode (see below) to hear sounds from any station(s) set to Monitor Mode.

To enter or exit Monitor Mode, press the station's **MUTE** and **TALK** buttons together. In Monitor Mode the **TALK** button lights.

#### Listen Mode

When a room or patio station is set to Listen Mode, the station's speaker is always on. Set a station to Listen Mode to hear all stations set to Monitor Mode.

Also, if the optional audio input wall plate has been installed, set a station to Listen Mode to hear audio from the wall plate.

To enter or exit Listen Mode, press the station's **MUTE** and **LISTEN** buttons together (on patio stations, press **MUTE** and **VOL↑** buttons together). In Listen Mode the **LISTEN** button lights.

Regular intercom operation still functions in Monitor Mode and Listen Mode.

