

# IP Update Tool Instructions



## Upgrading IP Camera Firmware

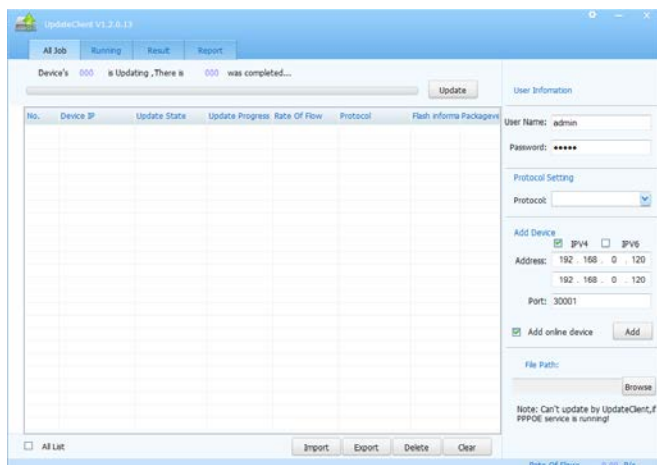
This bulletin applies to the following IP Camera models:

Model	Description
LV-D4-2MDI-312	Indoor Dome Camera, 4", 2MP, Full HD, Day/Night, IR, Audio In/Out, Micro SD Slot, 12VDC/PoE, 3.3-12mm Lens
LV-D4-2MDIV-312	Vandal Dome Camera, 4", 2MP, Full HD, Day/Night, IR, Audio In/Out, Micro SD Slot, 12VDC/PoE, 3.3-12mm Lens
LV-D4-3MDIWW312	Vandal Dome Camera, 4", 3MP, Full HD, Day/Night, IR, WDR, Audio In/Out, IP66, Micro SD Slot, 12VDC/PoE, 3.3-12mm Lens
LV-D4-5MIV-312	Vandal Dome Camera, 4", 5MP, Full HD, Day/Night, IR, Audio In/Out, IP66, Micro SD Slot, 12VDC/PoE, 3.3-12mm Lens
LV-D2-2MIV-3.6F	Mini Vandal Dome Camera, 2", 2MP, Full HD, IR, Audio In/Out, Micro SD Slot, 12VDC/PoE, 3.6mm Lens
LV-B2MDI-312	Bullet, Mini, Outdoor Camera, 2MP, IR, Day/Night, 1080p, SD Card Slot, IP66, 12VDC/PoE, 3.3mm-12mm Lens
LV-B3MDIW-312	Bullet, Mini, Outdoor Camera, 3MP, IR, Day/Night, IR, WDR, 2048x1536, SD Card Slot, IP66, 12VDC/PoE, 3.3mm-12mm Lens
LV-CAM-2M	Fixed Camera, 2MP, 12VDC/PoE, Audio, SD Card Slot, Full 1080p, Low Light, No Lens
LV-CAM-3MW	Fixed Camera, 3MP, 12VDC/PoE, WDR, Audio, SD Card Slot, 2048x1536, Low Light, No Lens
LV-CAM-5M	Fixed Camera, 5MP, 12VDC/PoE, Audio, SD Card Slot, 2592x1920, Low Light, No Lens

To update the firmware in the IP camera, follow these instructions:

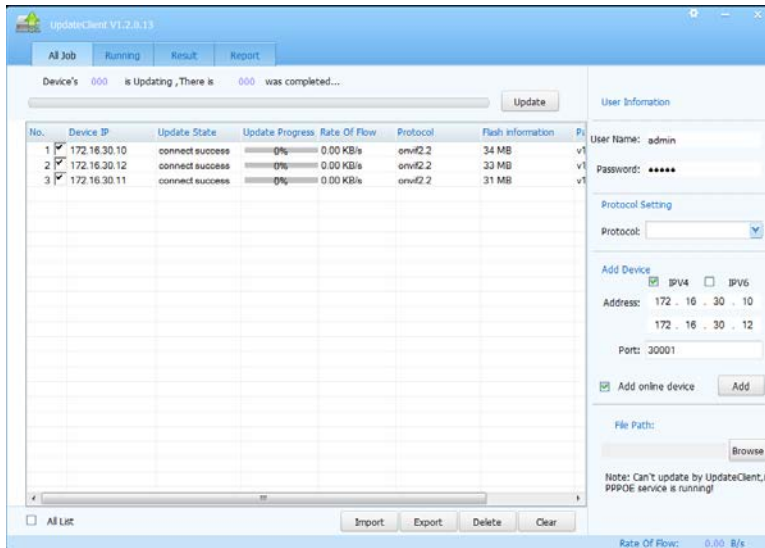
### Update Tool Application

To update the IP Cameras, please use the Update Tool application located on the CD that ships with the IP Camera or download from the Linear website. This application requires a computer running Windows XP, 7, or 8 operating system and a CD drive that accepts mini CD-ROMs. Launching the program will display the following screen.



On the right side of the dialog:

1. Input IP Cameras username and password (factory default: username: **admin** and password: **admin**).
2. Type the IP Address(es) of the IP Cameras on your network.
3. Click “Add”.



4. The IP Cameras should populate and the “Update State” should read connect success. If connection is not successful please check the username and password & confirm the IP Camera is powered up.
5. Under “File Path” click the “Browse” button. Find and select the firmware file that was downloaded. Then Click OK.
6. In the Update Client dialog window, click on the “Update” button.
7. The IP Camera will update the firmware and reboot. After a couple of minutes, the IP Cameras will be ready for use.

**NOTE:** The cameras will not be streaming video to any client devices or storage platforms (i.e. NVRs) during the firmware upgrade process or during the reboot.

---