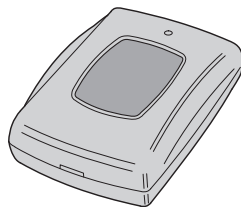


NAPPAN01

1-BUTTON PANIC / ALERT TRANSMITTER

Installation Instructions



Linear
Building On Innovation.

USA & Canada (800) 421-1587 & (800) 392-0123
(760) 438-7000 - Toll Free FAX (800) 468-1340
www.linearcorp.com

PRODUCT DESCRIPTION

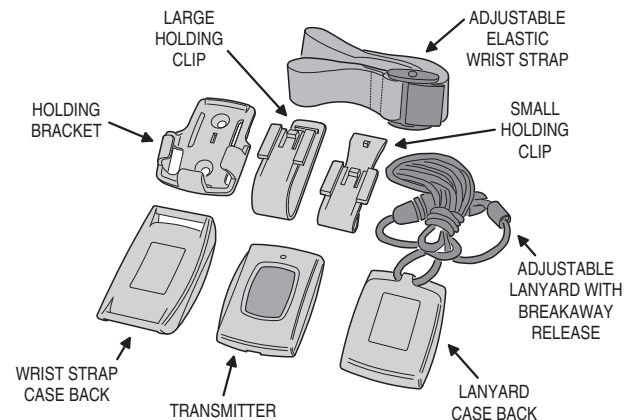
The NAPPAN01 is a battery powered portable transmitter designed for use with NAPCO® GEM and GEM-C systems. This transmitter can be used in a variety of wireless security and remote control applications. Pressing the transmitter's button sends a digitally coded wireless signal to its companion receiver. The red indicator will light when a signal is sent.

The NAPPAN01 can send three different signal types: fault (panic), low battery, and status. Receivers must be programmed to the transmitter's code before system testing and operation. Refer to the receiver's instructions for details on programming.

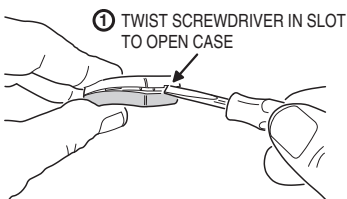
Being supervised, about every 65 minutes the transmitter sends a **status** signal to update the receiver. If the battery tests low, a **low battery** signal is included with any transmission. The transmitter is powered from one 3-Volt CR2032 lithium battery (included).

The transmitter can be customized with several installation options. Two different case backs are supplied for the transmitter. One case back is for use with the supplied elastic wrist strap, the other case back is used with the supplied adjustable lanyard with breakaway release. A holding bracket is supplied to retain the transmitter for stationary screw mounting or for use with the large or small holding clips included.

FEATURES

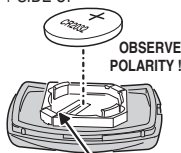


INSTALLING OR CHANGING BATTERY



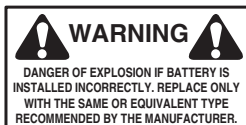
① TWIST SCREWDRIVER IN SLOT TO OPEN CASE

② INSTALL CR2032 BATTERY + SIDE UP



OBSERVE POLARITY !!!

TO REMOVE BATTERY, TWIST SMALL SCREWDRIVER HERE

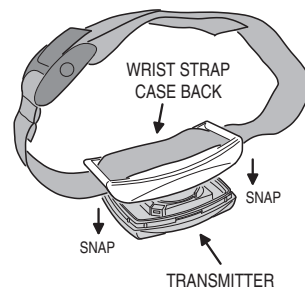
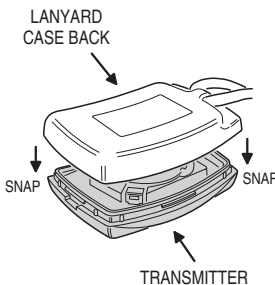


NOTICE TO USERS IN CALIFORNIA - CR COIN CELL LITHIUM BATTERY INFORMATION: THIS PRODUCT CONTAINS A CR COIN CELL LITHIUM BATTERY WHICH CONTAINS PERCHLORATE MATERIAL - SPECIAL HANDLING MAY APPLY - SEE www.dtsc.ca.gov/hazardouswaste/perchlorate

KEEP AWAY FROM SMALL CHILDREN. IF BATTERIES ARE SWALLOWED, PROMPTLY SEE A DOCTOR. DO NOT TRY TO RECHARGE THESE BATTERIES. DISPOSAL OF USED BATTERIES MUST BE MADE IN ACCORDANCE WITH THE WASTE RECOVERY AND RECYCLING REGULATIONS IN YOUR AREA.

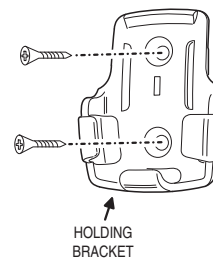
LANYARD & WRIST STRAP OPTIONS

CHOOSE THE BREAKAWAY LANYARD OR THE ADJUSTABLE WRIST STRAP OPTION AND SNAP THE CASE BACK ONTO THE TRANSMITTER



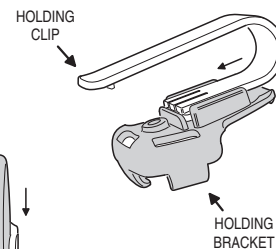
MOUNTING CLIPS

THE HOLDING BRACKET CAN BE SCREW MOUNTED IF DESIRED



TRANSMITTER SNAPS INTO BRACKET

THE SMALL OR LARGE HOLDING CLIP CAN SNAP ONTO THE HOLDING BRACKET



PROGRAMMING

For a detail programming guide, the instruction manual should be consulted for that panel. The below guide should only be used as a reference and not as a replacement for using the programming instructions.

1. Enter Panel Programming
2. Select Zone #
3. Enter 6 Digit ID number (located on back of unit)
4. Enter Check sum (0-9 ; A-F) (located on back of unit). Digit that follows ":" on the Serial ID. For A - F use 0 - 5 (See Below)
5. Enter Point "3" - For Panic
6. Push On/Off to Save

NOTE: Panic trouble must reset at keypad after disarm.

Alpha Numeric Conversion

A = *0	D = *3
B = *1	E = *4
C = *2	F = *5

SPECIFICATIONS

Operating Temperature: 32° to 120° F (0° to 49° C)

Operating Relative Humidity: 5 to 95%, non-condensing

Operating Frequency: 319.5 MHz

Battery Type: 3-Volt CR2032 Lithium Battery

LINEAR LIMITED WARRANTY

This Linear product is warranted against defects in material and workmanship for twelve (12) months. **This warranty extends only to wholesale customers** who buy direct from Linear or through Linear's normal distribution channels. Linear does not warrant this product to consumers. Consumers should inquire from their selling dealer as to the nature of the dealer's warranty, if any. **There are no obligations or liabilities on the part of Linear LLC for consequential damages arising out of or in connection with use or performance of this product or other indirect damages with respect to loss of property, revenue, or profit, or cost of removal, installation, or reinstallation.** All implied warranties, including implied warranties for merchantability and implied warranties for fitness, are valid only until the warranty expires. **This Linear LLC Warranty is in lieu of all other warranties express or implied.** All products returned for warranty service require a Return Product Authorization Number (RPA#). Contact Linear Technical Services at 1-800-421-1587 for an RPA# and other important details.

IMPORTANT !!!

Linear radio controls provide a reliable communications link and fill an important need in portable wireless signaling. However, there are some limitations which must be observed.

- * For U.S. installations only: The radios are required to comply with FCC Rules and Regulations as Part 15 devices. As such, they have limited transmitter power and therefore limited range.
- * A receiver cannot respond to more than one transmitted signal at a time and may be blocked by radio signals that occur on or near their operating frequencies, regardless of code settings.
- * Changes or modifications to the device may void FCC compliance.
- * Infrequently used radio links should be tested regularly to protect against undetected interference or fault.
- * A general knowledge of radio and its vagaries should be gained prior to acting as a wholesale distributor or dealer, and these facts should be communicated to the ultimate users.

This device complies with FCC Part 15 and Canada Rules and Regulations. Operation is subject to the following two conditions: (1) This device may not cause harmful interference and (2) this device must accept any interference received, including interference that may cause undesired operation.